



Health and Safety Policy

Month | 2015

Responsible Committee: Operations Committee

Date Effective: February 2014

Supersedes: September 2012

Next Review Done: February 2018

GENERAL POLICY

A declaration of our intent to provide and maintain, as far as is reasonably practicable, a safe and healthy working environment and to enlist the support of its employees in achieving these goals.

ORGANISATION AND RESPONSIBILITIES

This section sets out the health and safety responsibilities of key personnel within the organisation.

SAFETY ARRANGEMENTS

This section explains the systems and procedures that will be used to form the basis of our health and safety regime.

SAFETY RECORDS (this section may be in a separate folder). This section contains;

- An Annual Review of our Health and Safety System and Procedures.
- Periodic Checklists created specifically for individual roles and responsibilities.
- A comprehensive source of records relating to statutory examination periodic inspection and testing of the work equipment and installations used by our organisation. Records relating to Fire Safety Management will be found in the Fire Risk Management Pack.
- A system for keeping health and safety training records.
- A section for accident and incident reporting, and investigation.
- Records of the issue and maintenance of Personal Protective Equipment (PPE).

GENERAL POLICY

This Health and Safety Policy contains a plan detailing how we manage our health and safety issues. The policy sets out our commitment to manage risks and provide good standards of health and safety and also to meet our legal duties. Health and safety is an integral part of how we do business as a responsible employer and we have put in place the necessary organisation and arrangements to achieve this. This policy has been initiated after carrying out a full appraisal of our health, safety and welfare requirements and will be reviewed periodically (at least annually).

Health and Safety General Policy Statement

This is a declaration of our intent to provide and maintain, so far as is reasonably practicable, a safe and healthy working environment and to enlist the support of its employees towards achieving these goals. The General Policy statement is brought to the attention of all employees by publication in the main policy Manual and in the Employee Safety Handbook. It may also be included on notice boards in our premises.

Organisation

This part of the Policy details the health and safety responsibilities of key personnel within our organisation. These responsibilities are fulfilled by completion of various Safety Records, pro-formas and records in relation to on-going maintenance activities, training, accident reporting, and investigation, and actions that have taken place.

Relevant legislation

This page sets out details of the main statutes and regulations affecting health and safety at work that are currently in force.

Safety Arrangements

This part of the Policy explains the systems and procedures in place for managing individual topics or subjects for which our businesses is responsible.

HEALTH AND SAFETY GENERAL POLICY STATEMENT

At Seldoc Ltd we recognise our duties under current health and safety legislation and we will endeavour to meet the requirements of this legislation and maintain a safe and healthy working environment. Our Managers and Supervisors are informed of their responsibilities to ensure they take all reasonable precautions, to ensure the safety, health and welfare of those that are likely to be affected by the operation of our business.

Seldoc Ltd recognises its duty to make regular assessment of the hazards and risks created in the course of our business.

We also recognise our duty, so far as is reasonably practicable:

- to meet our legal obligations to maintain safe and healthy working conditions;
- to provide adequate control of the health and safety risks so identified;
- to consult with our employees on matters affecting their health and safety;
- to provide and maintain safe plant and equipment;
- to ensure the safe handling and use of substances;
- to provide information, instruction, training where necessary for our workforce, taking account of any who do not have English as a first language;
- to ensure that all workers are competent to do their work, and to give them appropriate training;
- to prevent accidents and cases of work related ill health;
- to actively manage and supervise health and safety at work;
- to have access to competent advice;
- to seek continuous improvement in our health and safety performance and management through regular (at least annual) review and revision of this policy; and
- to provide the resource required to make this policy and our Health and Safety arrangements effective.

We also recognise;

- our duty to co-operate and work with other employers when we work at premises or sites under their control to ensure the continued health and safety of all those at work; and
- our duty to co-operate and work with other employers and their workers, when their workers come onto our premises or sites to do work for us, to ensure the health and safety of everyone at work.

To help achieve our objectives and ensure our employees recognise their duties under health and safety legislation whilst at work, we will also inform them of their duty to take reasonable care for themselves and for others who might be affected by their activities.

We achieve this by explaining their duty and setting out our company health and safety rules in an Employee Safety Handbook which is made available to every worker employed by us.

In support of this policy a responsibility chart and more detailed arrangements have been prepared.

Signature **Date**

Position

RECORD OF PERIODIC REVIEW OF THE HEALTH AND SAFETY POLICY

Our Health and Safety General Policy Statement and Safety Arrangements are reviewed periodically. This is a record of these periodic reviews which should take place at least annually. Seldoc will also review the Health and Safety Management Documentation system to ensure that it meets current statutory requirements and good practice relevant to the organisation.

This record should be endorsed by all persons who carry out these periodic reviews

Date	Was This A Full Review Of The Health & Safety Policy And Procedures? Y/ N	Name Of Reviewer(S)	New Safety Policy Statement Signed / Dated Y / N	Tick if Reviewed By H&S Consultant

Note: where a new Health and Safety Policy General Statement of Intent has been signed and dated, this record should be endorsed to that effect (Column 4) and the new

signed and dated statement should be included in this Manual (page 5), replacing the previous statement.

All other signed and dated copies (on Notice Boards etc.) should also be replaced. The unsigned copy of the general policy statements in the Employee Safety Handbook should be replaced if the statement is changed.

ORGANISATION

Health and Safety Management Structure

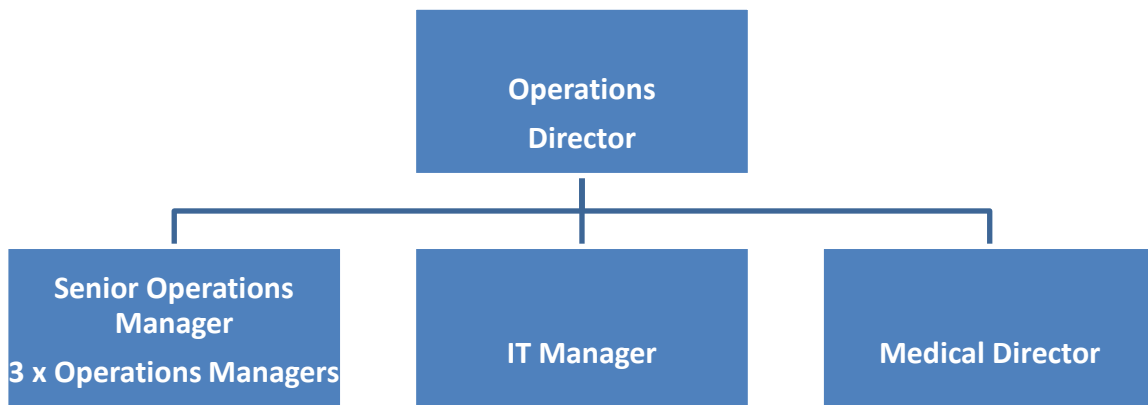
Introduction

The overall responsibility for the implementation of this policy.

The policy is executed through key personnel who have been allocated specific responsibilities for managing health and safety.

Emphasis is placed on recognising potential hazards and taking steps to minimise their effect on employees and others.

The organisational structure set out below shows the key personnel with health and safety responsibilities.



HEALTH AND SAFETY MANAGEMENT RESPONSIBILITIES

The overall responsibility for health and safety matters. We have identified a need for and taken action on the key issues below.

THE MANAGEMENT OF HEALTH AND

SAFETY General

- Provide a suitable means of consultation with employees on health and safety matters.
- Ensure that adequate Employers' Liability Insurance cover is arranged and maintained.
- Ensure that health and safety implications are considered when acquiring new equipment and machinery.
- Ensure that contractors (when employed) are competent and monitored during work.
- Ensure that a process is in place to identify and report hazards.
- Ensure that all employees are provided with appropriate health and safety training.
- Provide measures to protect the health and safety of employees working alone.
- Monitor the health and safety performance of the organisation.

Occupational Health

- Ensure that adequate procedures are in place to identify and address occupational health risks.
- Ensure that the measures required to reduce and control employees' exposure to occupational health risks are in place and used.
- Implement measures to reduce stress within the workplace.

Accidents, Incidents and First Aid

- Record accidents and incidents.
- Complete accident and incident investigations, identify causes and measures for prevention.
- Ensure that applicable injuries, diseases and dangerous occurrences are reported to the Enforcing Authority.
- Ensure that adequate first aid arrangements are in place.

Fire and Emergency Arrangements

Ensure that;

- Adequate arrangements are in place to deal with fire safety at our premises or at our client's premises.
- Employees are aware of the fire and evacuation arrangements and other emergency procedures.
- Emergency equipment is provided, tested and maintained appropriately.

- Adequate Fire Risk Assessments are completed.

Risk Assessment

Ensure that;

- Risk assessments are undertaken and Safe Systems of Work are produced for all activities that pose a significant risk of harm.
- Risk assessments are documented.
- The outcomes of risk assessments are communicated effectively to employees and others.

Premises

- Provide a suitable and safe working environment for employees with adequate welfare facilities.
- Ensure that the fixed electrical installation is adequately installed and maintained.
- Introduce and maintain measures to control and manage the risks posed by asbestos.
- Ensure good housekeeping standards are instigated and maintained.
- Provide suitable and sufficient maintenance of the facilities provided within the workplace.

Equipment

Ensure that;

- All equipment provided by the organisation is suitable and properly used.
- All work equipment is adequately maintained and safe.
- Portable electrical appliances are adequately maintained, inspected and tested.
- Appropriate hand tools are provided and maintained.
- Any Personal Protective Equipment (PPE) provided gives suitable protection, is used and that employees are given information, instruction and training on its use.

Substances

Ensure that;

- All substances are used safely.
- All substances are appropriately stored.

The Responsibility Table on the next page identifies the specific health and safety responsibilities and identifies the individuals they are allocated to. Employees with allocated responsibilities should refer to the associated Safety Arrangements which are available following the responsibility table within this document.

MONITORING

The operation of this policy and arrangements is actively monitored through the periodic review of our completed Safety Record Forms and also by using Periodic Workplace Checklists. The overall responsibility for this, but some of the routine tasks may be delegated. We also undertake an annual health and safety management review to determine whether our existing health and safety procedures and arrangements are adequate. This is achieved by completing an Annual Health and Safety Review form.

The continual review of the completed Annual Health and Safety Review records and the Periodic Workplace Checklists, along with our comprehensive Safety Records, helps us to check the effectiveness of our Safety Management System.

RESPONSIBILITY TABLE

This Responsibility Table illustrates the allocation of individual health and safety responsibilities to the personnel / management position identified within its header.

Key

OD – Operations Director

(S)OMs – (Senior) Operations Manager / Operations Managers

ICTM - ICT Manager

MD - Medical Director

SSs - Shift Supervisors

Safety arrangements	OD	(S)OMs	ICTM	MD	SSs
Managing Safety & Health at Work	"	"			
Accident, Incident & Ill Health Reporting	<input type="checkbox"/>			<input type="checkbox"/>	
Accident Investigation	<input type="checkbox"/>				
Workplace H&S Consultation - One-to-one	"	"		<input type="checkbox"/>	
Hazard Reporting	<input type="checkbox"/>				
Occupational Health and Health Surveillance	<input type="checkbox"/>				
Substance & Alcohol Abuse	<input type="checkbox"/>				
Purchasing		<input type="checkbox"/>			
Risk Assessment		<input type="checkbox"/>			
New and Expectant Mothers		<input type="checkbox"/>			
Employing Children & Young Persons		<input type="checkbox"/>			
Lone Working		<input type="checkbox"/>			
Health & Safety Training		<input type="checkbox"/>			
Health & Safety of Visitors	<input type="checkbox"/>				
Personal Protective Equipment		<input type="checkbox"/>			
Employing Agency and Temporary Staff	V'	V'			
Safe Systems of Work		<input type="checkbox"/>			<input type="checkbox"/>
Action on Enforcing Authority Reports	<input type="checkbox"/>				
Disability Discrimination Compliance	<input type="checkbox"/>				
H&S Information for Employees		<input type="checkbox"/>			<input type="checkbox"/>
Fire Safety - Arrangements and Procedures		<input type="checkbox"/>			
First Aid		<input type="checkbox"/>			
Welfare, Staff Amenities, Rest Rooms and the Working Environment					<input type="checkbox"/>
Housekeeping and Cleaning					<input type="checkbox"/>
The Control of Hazardous & Non Hazardous Waste		<input type="checkbox"/>			<input type="checkbox"/>

Safety arrangements	OD	(S)OMs	ICTM	MD	SSs
Access, Egress, Stairs & Floors					<input type="checkbox"/>
Workplace Signs		<input type="checkbox"/>			
The Control and Management of Healthcare Waste		<input type="checkbox"/>			
Electrical Safety		<input type="checkbox"/>			
The Provision, Use & Maintenance of Work Equipment		<input type="checkbox"/>			
Office Equipment		<input type="checkbox"/>			
Storage of Chemical Substances & Agents		<input type="checkbox"/>			
Slips, Trips & Falls		<input type="checkbox"/>			
Work at Height		<input type="checkbox"/>			
Access Equipment		<input type="checkbox"/>			
Occupational Road Safety		<input type="checkbox"/>			<input type="checkbox"/>
Infection Control		<input type="checkbox"/>		<input type="checkbox"/>	
Working Time, Night Work and Shift		<input type="checkbox"/>			
Work Related Upper Limb Disorders	<input type="checkbox"/>				
Manual Handling	<input type="checkbox"/>				
Display Screen Equipment & DSE User Eye Tests & Spectacles			<input type="checkbox"/>		<input type="checkbox"/>
Asbestos at Work-ACMs Present & No Off Site Risk		<input type="checkbox"/>			
Stress in the Workplace	<input type="checkbox"/>				
Aggression & Violence in the Workplace	<input type="checkbox"/>				
Drugs & Medication		<input type="checkbox"/>		<input type="checkbox"/>	
Contractor Control & Management			<input type="checkbox"/>		

Note:

Those persons who have been allocated responsibilities for health and safety issues should ensure that the required risk assessments and safety records are completed, either by them or by other persons and that the required control measures are implemented when work activities take place.

Where more than one person has been assigned responsibility to a particular subject, each should ensure that they have completed records for the areas under their control and together should ensure that the organisation has, collectively, covered all aspects of safety management for that subject.

RELEVANT LEGISLATION

In most cases Health and Safety legislation requires common sense, reasonably practicable precautions to avoid the risk of injury or ill-health at work. Our Health and Safety Management System does not quote specific legal references; giving instead the information and detail of what is required in practice to secure compliance. If the guidance and requirements of our Health and Safety Management System are adopted compliance with the legal requirements will be achieved.

This page sets out, for the record, details of the main statutes and regulations affecting health and safety at work that are currently in force.

Not every piece of the legislation will apply to our operation on a day to day basis, but we need to be aware of them should circumstances change.

Further detail and access to the specific wording of each of these legal requirements is available from the HSE (Health & Safety Executive). www.hse.gov.uk

- Building Regulations 2000
- Chemicals (Hazard Information and Packaging for Supply) Regulations 2009
- Classification, Labelling and Packaging of Substances and Mixtures Regulations 2008
- Confined Spaces Regulations 1997
- Construction, Design and Management Regulations 2007
- Control of Artificial Optical Radiation at Work Regulations 2010
- Control of Asbestos Regulations 2006
- Control of Lead at Work Regulations 2002
- Control of Major Accident Hazard Regulations 2005
- Control of Noise at Work Regulations 2005
- Control of Substances Hazardous to Health Regulations 2002 as amended
- Control of Vibration at Work Regulations 2005
- Corporate Manslaughter and Homicide Act 2007
- Dangerous Substances and Explosive Atmospheres Regulations 2002
- Disability Discrimination Act 2005
- Electricity at Work Regulations 1989
- Employers Liability (Compulsory Insurance) Regulations 1998 as amended 2008
- Employment of Women, Young Persons and Children Act 1920.
- Export and Import of Dangerous Chemicals Regulations 2005
- Factories Act 1961
- Furniture and Furnishings (Fire) (Safety) Regulations 1988 amended 1993
- Gas Appliances (Safety) Regulations 1995 as amended
- Gas Safety (Installation and Use) Regulations 1998
- Gas Safety (Management) Regulations 1996
- Hazardous Waste Regulations 2005
- Health and Safety Offences Act 2008
- Health and Safety at Work etc Act 1974
- Health and Safety (Consultation with Employees) Regulations 1996
- Health and Safety (Display Screen Equipment) Regulations 1992
- Health and Safety (First Aid) Regulations 1981

- Health and Safety Information for Employees Regulations 1989 as amended
- Health and Safety (Safety Signs and Signals) Regulations 1996
- Health and Safety (Training for Employment) Regulations 1990
- Ionising Radiations Regulations 1999
- Lifting Operations and Lifting Equipment Regulations 1998
- Lifts Regulations 1997
- Management of Health and Safety at Work Regulations 1999 as amended
- Manual Handling Operations Regulations 1992 as amended
- Notification of Cooling Towers and Evaporative Condensers Regulations 1992
- Notification of Employment of Persons Order 1964
- Offices, Shops and Railway Premises Act 1963
- Personal Protective Equipment Regulations 1992 as amended
- Pressure Systems Safety Regulations 2000
- Provision and Use of Work Equipment Regulations 1998
- Radiation (Emergency Preparedness and Public Information) Regulations 2001
- The Registration, Evaluation, Authorisation & Restriction of Chemicals Regulations 2007 (REACH)
- Regulatory Reform Fire Safety Order 2005
- Reporting of Injuries, Diseases and Dangerous Occurrences Regulations 1995
- Safety Representatives and Safety Committees Regulations 1977
- Work at Height Regulations 2005 as amended
- Workplace (Health, Safety and Welfare) Regulations 1992
- Working Time Regulations 1998 & 200

SAFETY ARRANGEMENTS TABLE

Ref. Number	Title	Publication Date
SA1-1	Managing Safety & Health at Work	2010/1
SA1-3	Accident, Incident & Ill Health Reporting	2010/1
SA1-4	Accident Investigation	2010/1
SA1-5	Workplace H&S Consultation - One-to-one	2010/1
SA1-6	Hazard Reporting (Near Miss Reporting)	2010/1
SA1-7	Occupational Health and Health Surveillance	2010/1
SA1-8	Substance & Alcohol Abuse	2010/1
SA1-9	Purchasing	2010/1
SA1-10	Risk Assessment	2010/1
SA1-11	New and Expectant Mothers	2010/1
SA1-12	Employing Children & Young Persons	2010/1
SA1-13	Lone Working	2010/1
SA1-14	Health & Safety Training	2010/1
SA1-15	Health & Safety of Visitors	2010/1
SA1-17	Personal Protective Equipment	2010/1
SA1-19	Employing Agency and Temporary Staff	2010/1
SA1-20	Safe Systems of Work	2010/1
SA1-21	Action on Enforcing Authority Reports	2010/1
SA1-22	Disability Discrimination Compliance	2010/1
SA1-23	H&S Information for Employees	2010/1
SA 2-1	Fire Safety - Arrangements and Procedures	2010/1
SA3-1	First Aid	2010/1
SA3-2	Welfare, Staff Amenities, Rest Rooms and the Working Environment	2011/2
SA3-3	Housekeeping and Cleaning	2011/2
SA3-6	The Control of Hazardous & Non Hazardous Waste	2011/2
SA3-9	Access, Egress, Stairs & Floors	2010/1
SA3-11	Workplace Signs	2010/1
SA3-18	The Control and Management of Healthcare Waste	2010/1
SA4-1	Electrical Safety	2010/1
SA4-2	The Provision, Use & Maintenance of Work Equipment	2010/1
SA4-4	Office Equipment	2010/1
SA4-5	Storage of Chemical Substances & Agents	2010/1
SA4-8	Slips, Trips & Falls	2010/1
SA4-20	Work at Height	2010/1
SA4-21	Access Equipment	2010/1
SA4-31	Occupational Road Safety	2010/1
SA5-4	Infection Control	2010/1
SA5-5	Working Time, Night Work and Shift Working	2010/1
SA5-6	Work Related Upper Limb Disorders WRULD	2010/1
SA5-9	Manual Handling	2010/1
SA5-11	Display Screen Equipment & DSE User Eye Tests & Spectacles	2010/1
SA5-16D	Asbestos at Work-ACMs Present & No Off Site Risk	2011/1
SA5-18	Stress in the Workplace	2010/1
SA5-19	Aggression & Violence in the Workplace	2010/1
SA6-3	Drugs & Medication	2010/1
SA7-2	Contractor Control & Management	2010/1

Safety Arrangement 1-1

MANAGING SAFETY AND HEALTH AT WORK

We recognise the business benefits that can accrue from the effective management of safety and health at work. To obtain these benefits for our company we have recognised the need for an effective management system and have taken steps to put such a system in place.

We have done this by;

- Nominating an individual member of the senior management to take responsibility for managing safety and health at work.
- Providing adequate resources
- Providing such health and safety information, instruction and training for all workers as is necessary for them to be able to work without risk to their health or safety so far as is reasonably practicable.
- Recording and analysing all reportable accidents, minor accidents, near-miss incidents and dangerous occurrences.
- Reporting reportable accidents within the statutory timescales (information is in our Guidance Notes).
- Providing and recording relevant training.
- Routinely reviewing the operation of our reporting system.
- Having access to competent health and safety advice.

The person nominated with responsibility for overseeing this organisation's arrangements for managing safety and health at work is identified within the Responsibility Table of our Health and Safety Policy.

MANAGING SAFETY AND HEALTH AT WORK

Action Plan

In order to meet our legal obligations to report accidents, incidents and cases of work related ill health to the Enforcing Authority we need to;

1. Identify a person to take responsibility for managing health and safety in our business activities.
2. Ensure that the responsible person understands their duties and responsibilities.
3. Provide adequate training for that person.
4. Give that person the authority required and the resource necessary for them to fulfil their role.
5. Plan our management of health and safety at work, set up and maintain systems that will deliver a satisfactory health and safety performance.
6. Explain to our workers, Supervisors and Managers the nature of our arrangements for managing health and safety at work.
7. Ensure that all our workers are aware of the need to make concerns about health and safety at work known and report accidents, incidents and cases of work-related ill health to their Managers.
8. Review our arrangements from time to time to ensure that they are fully understood and are operating correctly.

Advice and guidance on the reporting requirements and reporting system can be found in our Guidance Note 1-1 – Managing Safety and Health at Work.

Safety Arrangement 1-3

ACCIDENT, INCIDENT AND ILL HEALTH REPORTING

We encourage our employees to report all personal injury accidents and near miss incidents that happen in the course of their work so that we can learn from experience and improve our management of health and safety. We also use the information to help us meet our obligations under the legislation requiring accidents to be reported to the Enforcing Authority.

We do this by;

- Nominating an individual member of staff to be responsible for recording and reporting accidents.
- Having accident, incident or dangerous occurrence reporting procedures.
- Recording and analysing all reportable accidents, minor accidents, near-miss incidents and dangerous occurrences.
- Reporting reportable accidents within the statutory timescales (information is in our Guidance Notes).
- Providing and recording relevant training.
- Routinely reviewing the operation of our reporting system.

The personnel responsible for reporting accidents, incidents and dangerous occurrences are identified within the Responsibility Table of our Health and Safety Policy.

ACCIDENT, INCIDENT AND ILL HEALTH REPORTING

Action Plan

In order to meet our legal obligations to report accidents, incidents and cases of work related ill health to the Enforcing Authority we need to;

1. Identify a person to be responsible for managing our reporting arrangements.
2. Ensure that the responsible person understands the reporting requirements and their responsibilities.
3. Provide the responsible person with the reporting forms and accident book.
4. Explain to our workers, Supervisors and Managers the nature of the incidents that have to be reported.
5. Ensure that all our workers are aware of the need to report such accidents, incidents and cases of work-related ill health to their Managers.
6. Set up a system to ensure that Managers make timely reports of such incidents to the responsible person.
7. Review our arrangements from time to time to ensure that they are fully understood and are operating correctly.
8. Review the causes of the incidents that have occurred to consider whether similar incidents could be prevented by the introduction of reasonably practicable control measures.

Advice and guidance on the reporting requirements and reporting system can be found in our Guidance Note 1-3 – Accident, Incident and Ill Health Reporting.

Safety Arrangement 1-4

ACCIDENT INVESTIGATION

To identify improvements to our safety, health and welfare management system, we have set up an accident investigation procedure for our business.

Our duty is to ensure the safety, health and welfare of those who work for us and other people who use our premises. We have systems in place to investigate all personal injury accidents and 'near miss' incidents that occur, so that we can take action to prevent similar accidents.

We do this by:

- Nominating senior staff members to investigate accidents.
- Developing and implementing accident investigating protocols and policies.
- Ensuring that those carrying out accident investigations are competent.
- Providing relevant training.
- Recording details so that we can review and develop our systems.

The personnel responsible for the above measures are identified within the Responsibility Table of our Health and Safety Policy.

ACCIDENT INVESTIGATION

Action Plan

To set up a system for investigating personal injury accidents and near miss incidents we need to;

1. Ensure that the people nominated with responsibility for these arrangements have the knowledge and experience to operate the system effectively.
2. Provide suitable training for those who don't.
3. Create the system and make sure it is known to all members of our workforce.
4. Consider as part of the system;
 - a. recording the time and date of the accident, the local lighting and weather conditions at the time of the accident.
 - b. recording what the injured person and any witnesses were doing at the time of the accident.
 - c. noting risk assessments or safe systems of work for the task being carried out and details of relevant training by the injured party and others involved.
 - d. obtaining witness statements, where possible.
 - e. making a sketch of the accident area incorporating accurate measurements, where needed.
 - f. taking photographs of the accident site; pay special attention to any unusual or causal features present.
 - g. making observational notes on the potential causes of the accident, noting any features, equipment defects or work malpractice that may have contributed to the eventual outcome.
 - h. the underlying causes as well as immediate causes for the accident.
 - i. considering and adopting action to prevent a repeat.
5. Keep a written record of investigations.
6. Explain these arrangements to our workforce. Ensure they are understood.
7. Implement the procedure and ensure that it is followed in practice.
8. Monitor and review the operation of this procedure from time to time to check that the investigation procedures are understood, are being followed in practice and that lessons learned are being put into practice.

Advice and guidance on accident investigation can be found in our Guidance Note 1-4 – Accident Investigation.

Safety Arrangement 1-5

WORKPLACE HEALTH AND SAFETY CONSULTATION

We have a duty to consult with our workforce on matters affecting their health, safety and welfare whilst at work. To meet this obligation we have established a process for Managers to consult with employees and elected safety representatives about work-related health, safety and welfare issues. We also use this system to deliver simple safety messages and rules through short tool-box talks.

We do this by:

- Nominating Supervisors and Managers to organise and hold consultation meetings and tool box talks.
- Arranging scheduled formal consultation meetings or tool box talks between Managers, elected representatives and employees (see also Guidance Note – Workplace Health and Safety Consultation).
- Developing and implementing consultation procedures.
- Implementing and undertaking where necessary a 'one to one' consultation process with individual employees. Details of such sessions will be recorded.
- Taking and keeping minutes of consultation meetings, making them available to all staff.
- Being seen to listen and act on issues and concerns raised during 'one to one' consultation meetings.

The management / supervisory personnel responsible for implementing and operating this consultation process are identified within the Responsibility Table of our Health and Safety Policy.

WORKPLACE HEALTH AND SAFETY CONSULTATION

Action Plan

To set up a system for consulting with our workforce on health and safety at work matters we need to;

1. Ensure that the people nominated with responsibility for these arrangements have the knowledge and experience to operate the system effectively.
2. Provide suitable training for those who don't.
3. Create the system and make sure it is known to all members of our workforce.
4. Consider as part of the system;
 - a. recognising and involving representatives of the workforce from all levels.
 - b. permitting employee representatives to have time off to attend relevant health and safety training.
 - c. provide training for employee representatives if necessary or beneficial to the process.
 - d. scheduling health and safety as an agenda item for Consultation meetings.
 - e. implementing and undertaking 'one to one' consultation sessions with individual employees.
 - f. formally recording the outcomes of all consultation meetings and retaining these records.
 - g. making the outcomes of consultation meetings available to all those employees affected by them.
5. Explain these arrangements to our workforce. Ensure they are understood.
6. Implement the procedure and ensure that it is followed in practice.
7. Monitor and review the operation of this procedure from time to time to check that our workforce is consulted about health and safety matters that affect them whilst at work.

Advice and guidance on consultation arrangements and procedures can be found in our Guidance Note 1-5 – Workplace Health and Safety Consultation.

Safety Arrangement 1-6

HAZARD REPORTING (Near Miss Reporting)

We encourage our employees to report all hazards observed in the course of their work, so that action can be taken to improve our management of health and safety and ultimately prevent the hazard accumulating into an accident resulting in an injury.

We do this by;

- Nominating an individual member of staff to be responsible for recording and reporting hazards.
- Having hazard reporting procedures and communicating these to workers.
- Recording and analysing hazards when they occur and investigating corrective and preventive measures.
- Providing and recording relevant training.
- Routinely reviewing the operation of our reporting system.

The personnel responsible for hazard reporting are identified within the Responsibility Table of our Health and Safety Policy.

HAZARD REPORTING (Near Miss Reporting)

Action Plan

In order to protect our employees from potential injuries and encourage employees to report hazards we need to;

1. Identify a person to be responsible for managing our reporting arrangements.
2. Ensure that the responsible person understands the reporting requirements and their responsibilities.
3. Provide the responsible person with the hazard reporting forms.
4. Explain to our workers, Supervisors and Managers the nature of the hazards that should be reported.
5. Ensure that all our workers are aware of the need to report such hazards to their Managers.
6. Ensure the responsible person takes action on the report in the initial period following the reporting and considers the issues raised the associated risk and possible remedial action.
7. Review the causes of the hazards to consider whether similar hazards can be prevented by the introduction of reasonably practicable control measures.
8. Review our arrangements from time to time to ensure that they are fully understood and are operating correctly.

Advice and guidance on the reporting requirements and reporting system can be found in our Guidance Note 1-6 – Hazard Reporting.

Safety Arrangement 1-7

OCCUPATIONAL HEALTH/HEALTH SURVEILLANCE

We have a duty to ensure the health and wellbeing of our employees who may be affected by the incidence of ill health arising from their work activities. We shall implement systematic, regular and appropriate procedures to detect early signs of work-related ill health among employees exposed to certain health risks; and acting on the results.

We do this by;

- Nominating senior staff members to coordinate and manage health surveillance screening programmes.
- Developing and implementing strategies, procedures etc.
- Ensuring that the development of the strategies and procedures relating to health surveillance are undertaken by competent, trained personnel.
- Ensuring that Managers, employees and others follow our procedures and rules.
- Providing and recording relevant training.
- Recording Health Surveillance.
- Monitoring and reviewing our systems; using our experience of operating these arrangements we aim to make improvements to the way we coordinate health surveillance.

The personnel responsible for the above measures are identified within the Responsibility Table of our Health and Safety Policy.

OCCUPATIONAL HEALTH/HEALTH SURVEILLANCE

Action Plan

To set up a health surveillance system we need to;

1. Consider our activities and identify where and when workers may be exposed to health risks.
2. Risk assess that work, identifying if any exposure is above the limit value or the action value set by law.
3. Where exposure is above the exposure limit take immediate steps to reduce exposure to below the limit value.
4. Consider issues including:
 - a. Are any groups or individual workers at particular risk?
 - b. Health Surveillance is normally required for exposure to
 - i. Chemical hazards - dusts, fumes, solvents, liquids or gases.
 - ii. Biological hazards - bacteria, viruses, animals, plants and food stuffs.
 - iii. Physical hazards - musculoskeletal injuries, noise, vibration, extreme heat and cold.
 - iv. Stress - excessive workloads and tasks which affect their emotions.
 - v. Asbestos, lead, work in compressed air.
 - c. What is the level of surveillance required?
 - i. A 'responsible person' looking for a clear reaction where someone is working with something that could harm their health, e.g. checking for skin damage on hands where solvents are being used.
 - ii. A 'qualified' person asking employees about symptoms of ill health or inspecting or examining individuals for signs of ill health, e.g. conducting a hearing test, or a lung function test.
 - iii. Medical surveillance by a doctor, which can include clinical examinations to look for a reaction from exposure to some chemicals.
 - d. Keeping confidential individual health records where required
 - e. Are baseline health assessments required when a person takes up or changes job?
5. Explain these arrangements to our workforce. Ensure they are understood.
6. Provide training where required and information for staff nominated with responsibility.
7. Implement the procedure and ensure that it is followed in practice.

8. Report cases of whole body vibration which result in a worker being unfit for work and which are confirmed by a medical practitioner to the Enforcing Authority.
9. Monitor and review the operation of this procedure from time to time making changes identified as necessary.

Information and advice on health surveillance can be found in Guidance Note 1-7.

Safety Arrangement 1-8

SUBSTANCE and ALCOHOL ABUSE

We have a duty to protect the safety, health and welfare of our employees and others from the hazards that may arise as a result of workers abusing alcohol and other substances.

We do this by:

- Nominating senior staff members to coordinate and manage our substance and alcohol abuse policies and provision.
- Developing and implementing strategies, policies and procedures.
- Providing competent accredited trained personnel to provide support and counselling services.
- Employees and others adhering to the contents of our procedures and policies.
- Providing and recording relevant training
- Monitoring and reviewing our systems; using our experience of operating these arrangements we aim to make improvements to the way we manage the risks from substance abuse.

The personnel responsible for the above measures are identified within the Responsibility Table of our Health and Safety Policy.

SUBSTANCE and ALCOHOL ABUSE

Action Plan

To protect workers and others from the risks of working with people who abuse substances and alcohol we need to;

1. Develop a policy for dealing with workers whose abuse of substances and alcohol put other people at work at risk.
2. Consider;
 - a. The problem should be treated as an illness.
 - b. The problem can be successfully treated.
 - c. Disciplinary action is a last resort.
 - d. Sufferers may find it difficult to admit to a problem.
 - e. It is easier to take action in the early stages of the condition.
 - f. Staff should be able to identify early signs of problems.
 - g. Advice is available from many organisations including local Health Authorities.
3. Develop a policy and procedure based on these considerations.
4. Explain these arrangements to our workforce. Ensure they are understood.
5. Provide training and information, where required, for staff nominated with responsibility so that they are able to identify workers with substance abuse problems.
6. Implement the procedure, identify who is to provide support and counselling services and ensure that it is followed in practice.
7. Ensure that staff, particularly Managers and Supervisors, remains aware of our procedure although we hope and expect it will not be required in practice.
8. Monitor and review the operation of this procedure whenever it has been used, making changes identified as necessary or beneficial.

Information and advice on this subject can be found in our Guidance Note 1-8 - Substance and Alcohol Abuse.

PURCHASING

We have a duty to ensure the safety, health and welfare of our employees and others who enter our premises and we have systems in place to protect these groups from any adverse effects of all plant, equipment, supplies and substances that we purchase to support our work activities.

Our systems consist of:

- Nominating senior staff members to identify and manage the organisation's safe purchasing requirements.
- Developing and implementing a purchasing policy, identifying the safest available options.
- Ensuring that this policy is implemented by trained and competent staff.
- Ensuring that the equipment purchased is safe, adequate and suitable for its purpose, and that safety devices and other control measures are fitted.
- Providing adequate and sufficient personal protective equipment to employees.
- Providing relevant training.
- Monitoring and reviewing our systems; using our experience of operating these arrangements we aim to make improvements to our purchasing policy.

The personnel responsible for the above measures are identified within the Responsibility Table of our Health and Safety Policy.

Safety Statement 1-9

PURCHASING

Action Plan

To ensure that we purchase work equipment and substances that are safe, so far as is reasonably practicable, when used by our workers and others we need to;

1. Identify who in our company is authorised to purchase equipment, supplies and substances. Consider whether they need specific training for certain health and safety conditions.
2. Consider where we buy equipment and substances.
3. Obtain Manufacturer's Safety Data Sheets for the substances we purchase and consider the hazard and risk data provided.
4. When buying equipment specify in purchase orders that it complies with relevant European or National Standards.
5. On receipt of new equipment check that where relevant it bears compliance markings.
6. Involve workers in developing a procedure based on these considerations.
7. Explain these arrangements to our workforce. Ensure they are understood.
8. Provide training where required and information for staff nominated with responsibility.
9. Implement the procedure and ensure that it is followed in practice.
10. Monitor and review the operation of this procedure from time to time, making changes identified as necessary or beneficial.

Information and advice about health and safety on this subject can be found in our Guidance Note 1-9 – Purchasing.

Safety Arrangement 1-10

RISK ASSESSMENT

We have a duty to assess the significant risks arising out of our business activities and for specific areas of concern. We have a duty to implement the findings of these risk assessments to ensure the safety, health and welfare of our employees and others who may be affected by our work activity.

We do this by:

- Nominating senior staff members to oversee our risk assessment process.
- Ensuring that risk assessments are undertaken by competent, trained personnel.
- Developing risk assessments procedures, Safe Systems of Work and control measures to effectively control the work activities within our work premises. (**Risk Management Pack and Guidance Note**)
- Implementing the findings of the risk assessments, procedures, strategies, Safe Systems of Work and control measures.
- Employees and others adhering to procedures, control measures and Safe Systems of Work (**Risk Management Pack**).
- Regular inspections carried out at our premises to identify new processes etc. requiring assessment (**Safety Records**).
- Providing risk assessment training to the workforce.
- Reviewing our systems.

The personnel responsible for the above measures are identified within the Responsibility Table of our Health and Safety Policy.

We use the experience from operating these arrangements to make improvements to our safety, health and welfare management system.

Safety Arrangement 1-10

RISK ASSESSMENT

Action Plan

For our risk assessment process to be sufficiently robust to protect the health, safety and welfare of our employees and those affected by our work activity we need to;

1. Appoint and train sufficient numbers of staff in the process of risk assessment.
2. Systematically identify the hazards to which our workforce and others are exposed.
3. Consider the risks from those hazards identifying those at risk.
4. Evaluate the risks and decide if further precautions are required.
5. In significant cases record our findings.
6. Implement those findings.
7. In carrying out risk assessments we should involve Managers and workers in the area being assessed.
8. Explain the results of risk assessments to any affected staff and detail any new precautions or systems of work they need to follow.
9. Review risk assessments on a regular basis commensurate to the risk.

Safety Arrangement 1-11

NEW AND EXPECTANT MOTHERS

We have a duty to protect the health of new and expectant mothers from hazards that might be present in the workplace. We also have a duty to assess the risks to women of child bearing age from our activities and inform them of any potential risks that might affect a pregnancy.

We do this by:

- Nominating senior staff members to identify and assess the hazards which pose risk to new and expectant mothers.
- Developing and implementing systems and procedures that will protect all women of child bearing age from risks to unborn children.
- Developing and implementing systems and procedures that will protect new and expectant mothers and their children from hazards and risks in our workplace or risks from the work activity.
- Considering the personal needs of each new and expectant mother.
- Ensuring that the assessments are sensitively carried out by competent, trained personnel.
- Implementing the findings of each assessment.
- New and expectant mothers and other workers following agreed procedures and control measures.
- Recording our assessments and agreed plans.
- Monitoring and reviewing our systems; using our experience of operating these arrangements we aim to make improvements to the way we manage potential risks to new and expectant mothers.

The personnel responsible for the above measures are identified within the Responsibility Table of our Health and Safety Policy.

NEW AND EXPECTANT MOTHERS

Action Plan

To protect the health of new and expectant mothers and women of child bearing age we need to;

1. Assess the risks that our business activities may have on women of child bearing age and any potential foetus.
2. Inform the workforce of those risks.
3. Reduce those risks so far as is reasonably practicable.
4. Assess the risks to any worker who notifies us that they are pregnant or are returning to work after having given birth.
5. Consider factors such as;
 - a. Substances to which they might be exposed.
 - b. The size and shape of their workstation.
 - c. Posture.
 - d. Vibrations.
 - e. Environmental factors.
 - f. Ability to stand or sit for long periods.
 - g. Night working.
 - h. Lifting and carrying.
 - i. Noise levels.
 - j. Welfare arrangements.
6. Discuss the results of the risk assessment with the worker.
7. Consider how to reduce risks.
8. Find alternative work for the worker if it is not possible to reduce risks in her current job to an acceptable level. Alternatively give her paid absence from work.
9. Implement our decisions.
10. Make sure Supervisors and other employees are aware and understand the measures to be taken.
11. Review the risk assessment as pregnancy develops or as the pregnant worker makes any concerns or problems known.

Advice and guidance on managing the health and safety of new and expectant mothers can be found in Guidance Note 1-11.

Safety Arrangement 1-12

EMPLOYING CHILDREN AND YOUNG PERSONS

When we employ children and young persons or give them work experience we have particular duties to protect their safety, health and welfare whilst at work.

We do this by:

- Nominating senior staff members to be responsible for the young people and to identify the hazards which pose risk to young persons.
- Developing and implementing young person risk assessments, procedures, Safe Systems of Work and control measures.
- Ensuring that any young person assessments are particularly thorough and undertaken by competent, trained personnel.
- Explaining these assessments to the young people and their Supervisors.
- Ensuring that young persons are closely managed and supervised.
- Regularly inspecting the premises to identify any new processes, personnel or changes to the building's structure which would trigger the need for re-assessment.
- Employees and others adhering to the contents of procedures, control measures and Safe Systems of Work.
- Providing and recording relevant training.
- Monitoring and reviewing our systems; using our experience of operating these arrangements we aim to make improvements to the way we manage the risks to young people whilst they are working for us.

The personnel responsible for the above measures are identified within the Responsibility Table of our Health and Safety Policy.

Safety Arrangement 1-12

EMPLOYING CHILDREN AND YOUNG PERSONS

Action Plan

To protect children and young people who work for us or with us on work experience schemes we need to;

1. Appoint a Manager to oversee the employment of children and young persons.
2. Assess the risks to children and young persons from our activities and the work we give them to do.
3. Consider;
 - a. The jobs they do.
 - b. The substances that they might come into contact with.
 - c. Machinery and equipment they might be asked to use.
 - d. Their lack of experience.
 - e. Their lack of appreciation of industrial risks.
 - f. Their attention span.
 - g. Their immaturity.
 - h. Exposure to toxic, carcinogenic, mutagenic and tetragenic substances.
 - i. Physical and environmental hazards.
 - j. Close supervision is required.
 - k. Are their hours of work within the legal limits?
 - l. Is health surveillance required? If yes at what level?
4. Develop arrangements and procedures based on these considerations – involve the workforce.
5. Explain these arrangements and procedures to the young workers and their parents.
6. Explain the arrangements to our workforce. Ensure they are understood, especially by those who will be working alongside the young workers and provide further training where necessary.
7. Keep a written record of the risk assessment, the control measures and systems of work adopted. Record details of training given.
8. Make sure that Managers and Supervisors understand the procedures and arrangements. Consider whether they need any training.
9. Implement the arrangements and procedures and ensure they are followed in practice.
10. Monitor and review the operation of this procedure from time to time and after any incident causing injury or with the potential to cause injury to a young worker.

11. Make any changes to our procedures and arrangements identified as necessary.

Advice and guidance on the employment of children and young workers can be found in Guidance Note 1-12.

Safety Arrangement 1-13

LONE WORKING

Our company has a duty to ensure the safety, health and welfare of our workforce whilst at work. That duty extends to employees who travel during the course of their work and those who work away from our core premises.

We do this by:

- Nominating senior staff members to consider the health, safety and welfare of lone workers.
- Identifying situations where lone working is required which affect our employees.
- Making an assessment of the risks to members of our workforce who are or may become lone workers.
- Developing and implementing control measures and procedures to ensure their health and safety whilst at work.
- Providing sufficient funding support to enable the development and implementation of procedures, risk assessments and control measures.
- Ensuring that procedures and control measures are in place for lone working situations.
- Ensuring that identified equipment needs are met and training on their use is given.
- Ensuring that the content of the procedures and risk assessments are made available to all staff.
- Providing and recording training.
- Monitoring and reviewing our systems; using our experience of operating these arrangements we aim to make improvements to the way we manage the risks from lone working.

The personnel responsible for the above measures are identified within the Responsibility Table of our Health and Safety Policy.

Safety Arrangement 1-13

LONE WORKING

Action Plan

To protect the health, safety and welfare of our workers who work alone, whether it is because they are a mobile worker, because they work away from our core operating site or for other reasons, we need to;

1. Identify who among our workforce is or is potentially a lone worker.
2. Assess the risks to those identified as lone workers.
3. Identify the control measures already in place and any additional measures that may be required.
4. Consider, as part of our assessment, issues such as;
 - a. Where they work.
 - b. Are they at risk because they handle cash?
 - c. Are they at risk because they are work at a remote and hazardous installation?
 - d. Are they at greater risk in the winter months?
 - e. Are they at risk from a violent client or a member of the client's family?
 - f. Are they likely to cut corners because they are not under direct supervision?
 - g. Are they at risk because of health issues?
 - h. Are they at risk because a significant part of their day is spent driving?
 - i. Are they at risk because they work exceptional hours?
 - j. Are they at risk because they do not have access to welfare or first aid facilities?
 - k. Mobile phone signals.
5. Keep a written record of significant risk assessments and the control measures and systems of work adopted.
6. Make sure that Managers and Supervisors understand the procedures and arrangements. Consider whether they need any training.
7. Explain our system and arrangements to the workforce. Ensure they are understood and provide further training where necessary.
8. Implement the procedure and ensure that it is followed in practice.
9. Monitor and review the operation of this procedure from time to time and whenever an employee reports an accident or case of ill health attributable to working alone, make changes to the procedure identified as necessary or beneficial.

Advice on managing the risks from lone working can be found in Guidance Note 1-13.

Safety Arrangement 1-14

HEALTH AND SAFETY TRAINING

We have a duty to protect the health, safety and welfare of our employees whilst they are at work and others who might be affected by our work activities. Among other specific arrangements we need to be sure that our workforce is trained to recognise hazards and risks and what they need to do to eliminate, reduce and avoid risk.

We do this by:

- Nominating senior staff members to manage Health and Safety training.
- Making an assessment of the risks to our workforce and others from an inadequately trained workforce.
- Developing and implementing training policies, programmes and arrangements.
- Ensuring that the management of the policy, programmes and arrangements are undertaken by competent, trained personnel.
- Managing our activities to ensure that employees are adequately trained for the variety of tasks which they may be required to do.
- Providing and recording relevant training.
- Monitoring and reviewing our systems; using our experience of operating these arrangements we aim to make improvements to the way we manage our Health and Safety training programmes.

The personnel responsible for above measures are identified within the Responsibility Table of our Health and Safety Policy.

HEALTH AND SAFETY TRAINING

Action Plan

In developing and implementing training policies, programmes and arrangements we need to:

1. Assess our work activity to identify where and when workers or the public may be exposed to hazards and risks.
2. Where we identify hazards we need to consider the associated risks and the ability of staff to control them and then to identify whether their knowledge of and training about control measures is adequate.
3. Identify any jobs that require workers to have received specific health and safety training.
4. Identify the systems already in place to provide training and any additional measures that may be required.
5. Consider procedures and practices including ;
 - a. Plant and machinery.
 - b. Chemical and chemical processes.
 - c. Works transport.
 - d. Working at height.
 - e. Lifting machines and equipment.
 - f. Electrical safety.
 - g. Mundane work.
 - h. Occasional work activities.
 - i. Training needs analyses for individuals.
6. Involve the workforce in making these assessments of our needs.
7. Develop procedures, programmes and practices tailored to our workplace.
8. Explain these arrangements to the workforce, their Supervisors and Managers. Ensure they are understood and provide further training where necessary.
9. Implement the procedures and ensure that they are followed in practice.
10. Monitor and review the operation of the procedures from time to time making changes identified as necessary or beneficial.

Advice and guidance on the control of Health and Safety Training can be found in Guidance Note 1-14.

Safety Arrangement 1-15

HEALTH AND SAFETY OF VISITORS

We have a duty to ensure the health and safety of members of the public who come into our workplace.

We do this by:

- Nominating senior staff members to identify and risk assess the workplace hazards which pose risk to visitors.
- Making an assessment of the risks to visitors.
- Providing a visitors' book to track visitors present in our premises.
- Developing visitor procedures and control measures.
- Implementing visitor procedures and control measures.
- Ensuring that risk assessments are undertaken by competent, trained personnel.
- Regularly inspecting the premises to identify any new processes, personnel or changes to the building's structure that could pose new risk to visitors.
- Ensuring employees and others adhere to the contents of procedures, control measures and Safe Systems of Work.
- Providing relevant information and training.
- Monitoring and reviewing our systems; using our experience of operating these arrangements we aim to make improvements to the way we manage the risks to visitors.

Safety Arrangement 1-15

HEALTH AND SAFETY OF VISITORS

Action Plan

To protect visitors to our workplace we need to:

1. Assess our work activity to identify where and when the public may be exposed to hazard and risk.
2. Identify risks that visitors might face when at our workplace.
3. Where risks to the health and safety of visitors is identified or reported, assess those risks to identify where control measures are required.
4. Identify any control measures already in place and any additional measures that may be required.
5. Consider among other issues;
 - a. Where visitors go, when they go there, why they go there and what they do when they get there.
 - b. Floor coverings
 - c. Slippery floors
 - d. Chemical hazards
 - e. Electrical hazards
 - f. Condition of stairs etc
 - g. Machinery hazards.
 - h. Workplace transport.
6. Involve the workforce in making these assessments; use their experience.
7. Develop procedures, programmes and practices for ensuring visitor safety that are tailored to our workplace.
8. Explain these arrangements to the workforce, their Supervisors and Managers. Ensure they are understood and provide further training where necessary.
9. Implement the procedure and ensure that it is followed in practice.
10. Monitor and review the operation of this procedure from time to time and whenever a visitor suffers a work related injury, making changes to the procedure identified as necessary or beneficial.

Advice and guidance on the Health and Safety of visitors can be found in Guidance Note 1- 15.

Safety Arrangement 1-17

PERSONAL PROTECTIVE EQUIPMENT

Where the protection of the health, safety and welfare of our workforce and others who may be affected by our work activity can only be achieved by the issue of personal protective equipment we have a duty to provide such equipment as is necessary.

We do this by:

- Nominating senior staff members to coordinate the management of work related health and safety issues.
- Reviewing our arrangements and procedures for the management of hazards and risk to identify where existing controls are not sufficient to protect workers or others from the risk of ill health.
- Identifying where personal protective equipment (PPE) are required to reduce risk to an acceptable level or provide further protection.
- Assessing the suitability and adequacy of the PPE supplied for use.
- Explaining the need for and the correct use of PPE to the workforce.
- Making sure that Managers and Supervisors know why and when PPE is required.
- Managers and Supervisors ensuring employees and others wear PPE in designated areas.
- Providing facilities for storage, cleaning, maintenance and replacement of PPE.
- Providing and recording relevant training.
- Monitoring and reviewing the policy and procedures; using our experience of operating these arrangements we aim to continuously improve and reduce the incidence of work related ill health.

The personnel responsible for monitoring and implementing the use and issue of personal protective equipment are identified within the Responsibility Table of our Health and Safety Policy.

Safety Arrangement 1-17

PERSONAL PROTECTIVE EQUIPMENT

Action Plan

To protect the health, safety and welfare of our workforce and others who may be affected by our work activity by the issue of personal protective equipment we need to;

1. Assess our work activities to identify where and when workers or others may be exposed to risks to health that are not adequately controlled at source.
2. Where risks are identified - carry out an assessment of the risks to our workers and others.
3. Involve the workforce in these assessments.
4. Identify the control measures already in place and any additional measures that may be required before the use of PPE is adopted. Refer to manufacturers' guidance, trade guidance and British, European or Irish Standards etc.
5. Remember that the issue of PPE should only be considered when we are unable to control the hazard and risk by other reasonably practicable means.
6. Consider among other issues;
 - a. Elimination of the hazard.
 - b. Control of the hazard, extraction, dilution, dampening etc.
 - c. Adequacy of PPE.
 - d. Fitting of PPE to the individual user.
 - e. Storage facilities.
 - f. Arrangements for cleaning, repair and replacement.
 - g. Training for correct use, cleaning etc. Supervisors and users.
 - h. Supervising use.
 - i. Signs for area where the use of PPE is required.
 - j. Records of training, issue and replacement.
7. Develop procedures, programmes and practices tailored to our workplace.
8. Make sure that Managers and Supervisors understand the procedures and arrangements. Consider whether they need any training.
9. Explain these arrangements to the workforce. Ensure they are understood and provide further training where necessary.
10. Implement the procedure and ensure that it is followed in practice.

11. Monitor and review the operation of this procedure from time to time and following any incident, injury or case of ill health caused by inadequate or failure to use PPE, making changes to the procedure identified as necessary or beneficial.

Information and advice on the issue and use of PPE can be found in Guidance Note 1-17.

Safety Arrangement 1-19

EMPLOYING AGENCY AND TEMPORARY STAFF

We have a duty to ensure the health, safety and welfare of agency and temporary staff who are employed on our premises.

We do this by:

- Nominating senior staff members to liaise with recruitment agencies and coordinate the selection process of suitable, competent agency staff / temps.
- Identifying any specific risks to these temporary or agency staff whilst they are employed on our premises.
- Developing and implementing procedures and control measures necessary to protect the health and safety of temporary and agency to effectively control the risk posed.
- Assessing the abilities and health and safety of agency or temporary staff at work in the job for which we employ them.
- Ensuring that any assessment of these people is carried out by competent, trained personnel.
- Ensuring that all workers including the agency or temporary workers are aware of the procedures and measures in the event of an emergency.
- Ensuring that agency staff and temporary workers comply with our specific company rules.
- Monitoring and reviewing our systems; using our experience of operating these arrangements we aim to make improvements to the way we manage the risks to agency and temporary workers.

The personnel responsible for the above measures are identified within the Responsibility Table of our Health and Safety Policy.

Safety Arrangement 1-19

EMPLOYING AGENCY AND TEMPORARY STAFF

Action Plan

To protect the health, safety and welfare of agency and temporary staff which we employ we need to:

1. Liaise with the agency and set out our specific requirements including the nature of work for which agency workers are required and any specific training requirements or qualifications for agency workers.
2. Assess our work activity to identify where and when agency or temporary workers may be at risk.
3. Where risks are identified make an assessment of those risks identifying control measures that should be in place.
4. Identify the control measures already in place and the additional measures that may be required.
5. Consider among other issues;
 - a. detailed job descriptions for the employment agencies.
 - b. skill levels required.
 - c. language issues.
 - d. cultural differences.
 - e. training (job specific and induction)
 - f. supervision.
 - g. provision of personal protective equipment
6. Involve the workforce in making these assessments.
7. Develop procedures, programmes and practices tailored to our workplace.
8. Explain these arrangements to the workforce, their Supervisors and Managers. Ensure they are understood and provide further training where necessary.
9. Implement the procedure and ensure that it is followed in practice.
10. Monitor and review the operation of this procedure from time to time and whenever an agency or temporary worker suffers injury or work related ill-health, making changes to the procedure identified as necessary or beneficial.

Advice and guidance on the health and safety at work of agency and temporary staff can be found in Guidance Note 1-16.

Safety Arrangement 1-20

SAFE SYSTEMS OF WORK

We have a duty to ensure our workforce are provided with clear instructions and training when undertaking potentially hazardous tasks that pose significant risks.

We do this by:

- Nominating senior staff members to oversee and implement Safe Systems of Work.
- Identifying where Safe Systems of Work are required.
- Developing Safe Systems of Work to effectively control the work activities within our work premises.
- Communicating the Safe Systems of Work to applicable employees.
- Ensuring that Safe Systems of Work are created by competent, trained personnel.
- Providing training on the Safe System to the workforce.
- Regular checks to ensure that the Systems are being followed.
- Reviewing our systems.

The personnel responsible for the above measures are identified within the Responsibility Table of our Health and Safety Policy.

We use the experience from operating these arrangements to make improvements to our safety, health and welfare management system.

SAFE SYSTEMS OF WORK

Action Plan

To ensure that adequate Safe Systems of Work are in place for employees to follow we need to;

1. Appoint and train sufficient numbers of staff in the creation of the Safe System of Work.
2. Systematically identify the areas where a Safe System of Work may be required.
3. Assess the task and identify the hazards.
4. Define the safe method of undertaking the task.
5. Document the Safe System of Work and ideally display it at the work site where the work takes place.
6. Implement the System and ensure employees understand it. Provide training where necessary.
7. When developing and implementing Safe Systems of Work we should involve Managers and workers in the task being assessed.
8. Review Safe Systems of Work on a regular basis or when situations change.

Advice and guidance on Safe Systems of Work can be found in our Guidance Note 1-20 – Safe Systems of Work.

Safety Arrangement 1-21

ACTION ON ENFORCEMENT AUTHORITY REPORTS

We recognise the benefits that will accrue from early action following receipt of reports from the Enforcement Authority in regard to health safety and welfare issues. To obtain these benefits we have recognised the need for an effective management system and have taken steps to be able to action such reports.

We have done this by;

- Nominating an individual member of the senior management who will coordinate actions required to meet the requirements of Enforcement Authorities.
- Providing adequate resources either financial or human to be able to meet the requirements of the Enforcing Authority.
- Routinely reviewing the operation of our reporting system.
- Having access to competent health and safety advice.

The person nominated with responsibility for overseeing this organisation's arrangements for compliance with Enforcing Authority requirements is identified within the Responsibility Table of our Health and Safety Policy.

Safety Arrangement 1-21

ACTION ON ENFORCEMENT AUTHORITY REPORTS

Action Plan

In order to meet our legal obligations to provide adequate health and safety information to employees we need to;

- Identify a person who will coordinate actions required to meet the requirements of Enforcement Authorities.
- Ensure that the responsible person understands their duties and responsibilities.
- Provide adequate training for that person.
- Give that person the authority required and the resource necessary for them to fulfil their role.
- Ensure that our workers are aware of the need to make concerns about health and safety known and report accidents, incidents and cases of work- related ill health to their Managers.
- Review our arrangements from time to time to ensure that they are fully understood and are operating correctly.

Advice and guidance on this subject can be found in our Guidance Note 1-21 Action On Enforcement Authority Reports.

Safety Arrangement 1-22

DISABILITY DISCRIMINATION COMPLIANCE

We recognise the benefits that will accrue from planned and carefully considered arrangements in regard to disabled persons and health, safety and welfare issues. To obtain these benefits we have recognised the need for an effective management system and have taken steps to be able to successfully manage disability in the workplace.

We have done this by;

- Nominating an individual member of the senior management who will coordinate actions required to meet the requirements of disabled persons
- Providing adequate resources either financial or human to be able to reasonable adjustments to our workplace(s)
- Allowing employees to nominate safety representatives who will coordinate issues arising from their colleagues in respect of health, safety and welfare.
- Providing adequate resources
- Providing such health and safety information, instruction, and training for all workers as is necessary for them to be able to work without risk to their health or safety or welfare so far as is reasonably practicable.
- Recording and analysing all reportable accidents, minor accidents, near miss incidents and dangerous occurrences.
- Providing and recording relevant training
- Routinely reviewing the operation of our reporting system.
- Having access to competent health and safety advice.

The person nominated with responsibility for overseeing this organisation's arrangements for compliance with disability requirements is identified within the Responsibility Table of our Health and Safety Policy.

Safety Arrangement 1-22

DISABILITY DISCRIMINATION COMPLIANCE

Action Plan

In order to meet our legal obligations to avoid disability discrimination to employees we need to;

1. Identify a person who will coordinate actions required to meet the requirements of disability discrimination legislation.
2. Ensure that the responsible person understands their duties and responsibilities.
3. Provide adequate training for that person.
4. Give that person the authority required and the resource necessary for them to fulfil their role.
5. Review our arrangements from time to time to ensure that they are fully understood and are operating correctly.

Advice and guidance on this subject can be found in our Guidance Note 1 – 22 - Disability Discrimination

Safety Arrangement 1-23

HEALTH AND SAFETY INFORMATION FOR EMPLOYEES

We recognise the benefits that will accrue from the provision of effective information regarding health safety and welfare activities to our employees. To obtain these benefits we have recognised the need for an effective management system and have taken steps to provide adequate information to employees and others.

We have done this by;

- Allowing employees to nominate safety representatives who will coordinate issues arising from their colleagues in respect of health, safety and welfare.
- Providing adequate resources
- Providing such health and safety information, instruction, and training for all workers as is necessary for them to be able to work without risk to their health or safety or welfare so far as is reasonably practicable.
- Recording and analysing all reportable accidents, minor accidents, near miss incidents and dangerous occurrences.
- Providing and recording relevant training
- Routinely reviewing the operation of our reporting system.
- Having access to competent health and safety advice.

The person nominated with responsibility for overseeing this organisation's arrangements for provision of information to employees is identified within the Responsibility Table of our Health and Safety Policy.

Safety Arrangement 1-23

HEALTH AND SAFETY INFORMATION FOR EMPLOYEES

Action Plan

In order to meet our legal obligations to provide adequate health and safety information to employees we need to;

1. Identify a person to take responsibility for ensuring that adequate information is provided to employees.
2. Ensure that the responsible person understands their duties and responsibilities.
3. Provide adequate training for that person.
4. Give that person the authority required and the resource necessary for them to fulfil their role.
5. Identify the most effective methods by which information will be circulated to the employees.
6. Display the required health and safety 'What you should know' poster and complete the information on the poster.
7. Provide information to our employees in regard to their responsibilities and essential safety rules.
8. Explain to our workers, supervisors and managers the nature of our arrangements for managing health, safety and welfare.
9. Ensure that our workers are aware of the need to make concerns about health and safety known and report accidents, incidents and cases of work- related ill health to their Managers.
10. Review our arrangements from time to time to ensure that they are fully understood and are operating correctly.

Advice and guidance on this subject can be found in our Guidance Note 1-23 Health and Safety Information for Employees.

Safety Arrangement 2-1

FIRE SAFETY - ARRANGEMENTS AND PROCEDURES

We have a legal duty to implement and maintain a fire safety programme, for assessing and controlling the risks from an outbreak of fire and for the provision of fire warnings, fire fighting equipment, emergency lighting, emergency signs, adequate means of escape and evacuation procedures. We have put in place arrangements to meet these responsibilities and to identify and reduce the risks associated with fire and emergency situations.

Our arrangements consist of:

- 1 FP EMU [a[r11-NSFENiE11-[person¹ to coordinating fire and emergency arrangements and take responsibility for the completion and regular review of a Fire Risk assessment.
- Identifying fire risks and potential emergency situations and who may be affected.
- Assessing the level of risk and recording the information in the Fire Risk Assessment and emergency plan (**Fire Risk Management Pack**).
- Implementing procedures and control measures to mitigate the risks posed.
- Liaising with the emergency services, informing them of any workplace or process hazards that have the potential to create fire or emergency situations.
- Developing Safe Systems of Work to reduce the potential incidence of fire and emergency situations (**Action Plan**).
- Adequate provision of tested and inspected fire fighting and warning equipment (**Fire Risk Management Pack**).
- Practicing and recording fire evacuation procedures (**Fire Risk Management Pack**).
- Delivering training on the emergency plan, the Fire Risk Assessment and on the use of any fire fighting equipment provided (**Fire Risk Management Pack**).
- Reviewing our system.

The personnel responsible for fire and emergency arrangements are identified within the Responsibility Table of our Health and Safety Policy.

We use the experience of operating these systems to make improvements to our safety, health and welfare management system.

Safety Arrangement 2-1

FIRE SAFETY - ARRANGEMENTS AND PROCEDURES

Action Plan

To protect workers and others from the risk of fire we need to develop a comprehensive fire safety programme. We need to;

1. Nominate and train a person to be our competent and Responsible Person for fire safety matters.
2. Prepare and maintain an up to date fire risk assessment in respect of our premises and processes. If we have hazards which make our premises high fire risk we will need to get assistance from experts.
3. Provide and maintain (record details) sufficient and suitable fire alarm systems, means of escape, fire fighting equipment, emergency lighting and emergency signs.
4. Develop procedures for the safe and speedy evacuation to a place of relative safety of workers and others in the event of a fire or other emergency.
5. Where appropriate consult with the Fire Service in making these provisions and in developing our site specific arrangements and procedures.
6. Consider;
 - a. Fire prevention. Storage of flammables, waste disposal, open flames etc.
 - b. Potential sources of ignition including use of flammable substances and process related fire hazards.
 - c. Maintenance of fire alarms, smoke detectors, automatic door closers.
 - d. Maintenance of fire doors and escape routes.
 - e. Emergency procedures – fire wardens, fire and evacuation drills and safe assembly points.
 - f. Maintenance of fire extinguishers and fire fighting equipment.
 - g. Liaison with fire service and assisting the fire service in the event of a fire.
 - h. Providing and maintaining fire safety signs and notices.
 - i. Record keeping.
 - j. Safe means of shutting down electric, gas and fuel supplies.
7. Always purchase robust equipment suitable for our intended use.
8. Explain the Fire Safety Programme, Arrangements and Procedures to our Managers, Supervisors, workforce and any other people who need to know what they are; landlords, neighbours, visitors, residents etc. Ensure they are understood.
9. Provide training where required and information for staff nominated with responsibilities.
10. Implement the Programme and ensure that it is followed in practice.
11. Carry out fire alarm and evacuation drills to check that the Programme works in practice.

12. Monitor and review the operation of all aspects of the Fire Safety Programme at least twice a year and whenever a fire related incident happens, making changes to the fire risk assessment, arrangements and procedures identified as necessary or beneficial.

Advice and guidance on the development of a Fire Safety Programme can be found in our Guidance Notes 2-1 Fire Safety – Arrangements and Procedures and 2-2 Fire Risk Assessment and Management.

Safety Arrangement 3-1

FIRST AID

We have a duty to provide suitable first aid arrangements for our staff whilst at work and visitors who may be affected by our activities. We have taken steps to provide first aid arrangements that meet this requirement.

We do this by:

- Nominating a Senior Manager to oversee our first aid provision.
- Assessing the reasonable level of first aid provision required for our business at our workplace and for travelling staff.
- Recruiting sufficient members of staff to undertake first aid training.
- Arranging approved training for those people and keeping records of their training.
- Providing adequate numbers of trained personnel to be available at all times during business hours.
- Providing and maintaining sufficient quantities of first aid equipment and consumables.
- Displaying names and locations of first aid trained personnel in prominent positions throughout the premises.
- Routinely reviewing our first aid arrangements for suitability and ensuring that trained first aider qualifications are up to date.

The personnel responsible for coordinating first aid activities and ensuring adequate first aid provision are identified within the Responsibility Table of our Health and Safety Policy.

Safety Arrangement 3-1

FIRST AID

Action Plan

To ensure that we meet our obligations to provide suitable first aid arrangements for our staff whilst at work and visitors who may be affected by our activities we need to take the following action;

1. Assess our business activity to identify the level of first aid provision that will be necessary.
2. Consider issues including;
 - a. The likely severity of foreseeable work-related accidents.
 - b. The number of people likely to be in the workplace.
 - c. The nature of health and safety risks at the workplace.
 - d. The location and accessibility of the workplace.
3. Keep a written record of your assessment and conclusions.
4. Explain our assessment and conclusions to our workforce.
5. Identify workers to be trained and take responsibility for administering first aid.
6. Provide approved training for appointed first aiders.
7. Keep records of this training and ensure qualifications are kept up to date.
8. Make sure our arrangements are understood and the responsible people known to all workers, Supervisors and Managers.
9. Provide suitable facilities and consumables for delivering first aid at our workplace.
10. Monitor and review from time to time the operation of this procedure in the light of experience making changes to our system identified as necessary or beneficial.

Information and advice on First Aid provision can be found in our Guidance Note 3-1 – First Aid.

Safety Arrangement 3-2

WELFARE, STAFF AMENITIES, REST ROOMS and the WORKING ENVIRONMENT

We are obliged to make and maintain arrangements for welfare and the provision of a safe and healthy working environment for our workforce whilst they are at work. This includes a duty to provide restrooms where work is arduous or conducted in a hostile environment and for the welfare of new and expectant mothers.

We do this by;

- Nominating senior staff members to oversee our provision and maintenance of welfare facilities and a safe working environment.
- Maintaining our workplace including buildings and fixtures in good order and according to required standards.
- Providing welfare facilities that are fit for purpose and include adequate hot, cold and drinking water, sanitary conveniences, hand washing facilities, facilities for meal breaks, sufficient light, heat and ventilation.
- Implementing housekeeping, cleaning and maintenance regimes.
- Providing and recording relevant instruction and training.
- Regular monitoring and review of our arrangements and facilities to ensure that they remain sufficient and are adequately maintained.

The personnel responsible for these measures are identified within the Responsibility Table of our Health and Safety Policy.

Safety Arrangement 3-2

WELFARE, STAFF AMENITIES, REST ROOMS and the WORKING ENVIRONMENT

Action Plan

To ensure that we make the proper and necessary arrangements for welfare

and to

provide a safe working environment for our workforce we need to;

1. Consider the arrangements we have in place to provide for the welfare of our workforce whilst at work and to provide a safe working environment.
2. Assess the specific welfare arrangements, including rest rooms and catering areas, that we have provided against both minimum legal requirements and what might reasonably be expected by law; particularly where work may be arduous or in a hostile environment.
3. Consider among other relevant issues;
 - a. our worksite, the condition of the buildings;
 - b. temperature, ventilation and lighting in the workplace;
 - c. the use of chemical, biological and radiological substances;
 - d. the condition of floors, walls and ceilings;
 - e. traffic routes;
 - f. sanitary and washing facilities;
 - g. clothing accommodation, changing rooms and rest rooms;
 - h. drinking water and the means for making hot drinks and heating food;
 - i. workers in isolated locations;
 - j. the needs of nursing and expectant mothers;
 - k. the heating and cleaning of rest rooms and welfare facilities.
4. Involve workers in these considerations and in the development and maintenance of facilities and arrangements based on these considerations.
5. Keep a written record of significant assessments, actions identified and taken.
6. Provide information and any necessary training to employees, Managers and any staff nominated with responsibility to ensure that our arrangements and provisions are understood.

7. Monitor welfare arrangements and facilities to ensure that they remain sufficient, are maintained in a good clean condition and are fit for purpose.

For information and advice, please see;
Guidance Note 3-2, Welfare and the Working
Environment. Guidance Note 3-8, Staff Amenities and
Rest Rooms. Guidance Note 1-11, New and Expectant
Mothers.

Safety Arrangement 3-3

HOUSEKEEPING and CLEANING

We have a duty to ensure the safety, health and welfare of our employees and others who enter our premises by keeping it in a clean, tidy and sanitary condition.

We do this by:

- Nominating senior staff members to oversee the provision and management of housekeeping facilities and arrangements. Where necessary, making a risk assessment of the risks posed to our workforce and others from housekeeping activities.
- Developing and implementing cleaning procedures and associated safe systems of work where required.
- Ensuring that competent, trained personnel undertake the management of the policy, cleaning regimes and control measures.
- Carrying out regular housekeeping audits.
- Providing and using personal protective equipment where necessary.
- Managing our activities to ensure that employees and others use the control measures provided and follow our policies and procedures.
- Providing instruction and where necessary training which is recorded.
- Regular monitoring and review of our arrangements; to ensure that the workplace is kept clean and that our cleaning arrangements are adequate.
- Employees and others adhering to the contents of the procedures and safe systems of work.

The personnel responsible for the above measures are identified within the Responsibility Table of our Health and Safety Policy.

Safety Arrangement 3-3

HOUSEKEEPING and CLEANING

Action Plan

**To ensure that we keep our workplace tidy and in a clean, sanitary condition
we need**

to;

1. Assess all areas of the workplace and work activities to determine the cleaning requirements for each area.
2. Devise and implement cleaning plans and schedules for each area; specifying and recording them.
3. In devising these plans consider issues including;
 - a. Floors, stairs, toilets, rest and catering areas, outside paths, roadways and storage areas, etc.
 - b. The contaminant and the most appropriate method for cleaning; vacuum cleaning is better than sweeping
 - c. Dry cleaning or wet cleaning. Wet cleaning may leave slippery floors.
 - d. The source of the contaminant - can it be contained other than by cleaning?
 - e. The frequency of and best time of day for cleaning.
 - f. Waste handling and disposal – offensive, unhygienic, infected, chemical, process etc.
 - g. Warning signs.
 - h. Hazards associated with chemical cleaners.
 - i. Cleaning around potentially hazardous equipment.
 - j. Procedures for cleaning hazardous equipment.
4. Involve the workforce in making these assessments of our needs.
5. Explain these arrangements to the cleaning team, the workforce, their Supervisors and Managers. Ensure they are understood. Provide and record training where necessary.
6. Resource and implement the procedures ensuring that they are followed in practice.
7. Make sure Managers understand the requirements.

8. Monitor the implementation and continuing effectiveness of our procedures to ensure that our workplace is being cleaned properly and adequately.
9. Amend our systems and procedures as necessary in the light of operational experience.

Advice and information on Housekeeping can be found in Guidance Note 3-12.

Safety Arrangement 3-6

CONTROL OF HAZARDOUS AND NON- HAZARDOUS WASTE

We have a duty to ensure that we effectively and safely dispose of waste materials and products and control the methods of disposal used so that our workforce and any others who might be affected are not at risk to their health, safety or welfare.

We do this by:

- Nominating senior staff members to control the disposal of waste, both hazardous and non-hazardous wastes, from our work premises to minimise the risk posed.
- Assessing the risks to our workers from the handling and disposal of waste.
- Developing and implementing policies, procedures, Safe Systems of Work and control measures relevant to the control of waste including measures necessary to ensure compliance with environmental legislation.
- Ensuring that waste disposal is undertaken by competent, approved personnel, using the correct personal protective equipment.
- Ensuring that the safest means of disposal is used to protect the environment.
- Employees and others adhering to procedures, control measures and Safe Systems of Work.
- Providing and recording relevant training.
- Regular monitoring and review of our arrangements and facilities to ensure that we continue to manage and dispose of waste, hazardous and non-hazardous, without risks to health or safety.

The personnel responsible for the above measures are identified within the Responsibility Table of our Health and Safety Policy.

Safety Arrangement 3-6

CONTROL OF HAZARDOUS AND NON- HAZARDOUS WASTE

Action Plan

To ensure our workforce and any others who might be affected are not at risk to their health, safety or welfare from the way we dispose of hazardous and non-hazardous waste materials and products we need to:

1. Identify where we create waste and rubbish during the course of our business.
2. Assess the hazard that the waste materials may present to people at work and others and the risks they face from it.
3. Identify hazardous and controlled wastes.
4. Consider issues relevant to our workplace including;
 - a. Whether the waste is particularly hazardous because it is a classified chemical substance.
 - b. Whether the waste is hazardous because it is or contains biological agents.
 - c. Whether the waste is hazardous because it is sharp, heavy or flammable.
 - d. How is it stored in the workplace?
 - e. How is it moved about the workplace?
 - f. How is it stored outside the premises? Is it secure? Can the public gain access?
 - g. Is the way we store waste an invitation to an arsonist?
 - h. How can we make the process easier and safer for our workers?
5. Consider how environmental legislation and requirements might impact on health and safety procedures and how the waste is disposed of..
6. Involve workers in developing a procedure based on these considerations.
7. Keep a written record of significant risk assessments and the control measures and systems of work adopted.
8. Make sure that Managers and Supervisors understand the procedures and arrangements. Consider whether they need any training.
9. Explain our system and arrangements to the workforce. Ensure they are understood and provide further training where necessary.
10. Implement the procedure and ensure that it is followed in practice.
11. Monitor and review the operation of this procedure from time to time making changes to the procedure identified as necessary or beneficial.

Advice and guidance on the control of hazardous and non-hazardous waste can be found in Guidance Note 3-6.

Safety Arrangement 3-9

ACCESS, EGRESS, STAIRS AND FLOORS

We have a duty to protect the health, safety and welfare of our workforce while at work and others who come onto our premises from the risk of injury due to badly maintained access and exit routes, stairs and floors.

We do this by:

- Nominating senior staff members to be responsible for monitoring and reducing incidents occurring as a result of incidents involving access and egress facilities, including stairs and floors etc.
- Making an assessment of the risks from incidents involving access and egress facilities, including stairs and floors etc.
- Developing and implementing control measures, policies and Safe Systems of Work.
- Ensuring that the management of the policy, procedures, Safe Systems of Work and control measures relating to slips, trips and falls are undertaken by competent, trained personnel.
- Managing our activities to ensure that employees and others use the control measures provided and follow our policies, procedures and Safe Systems of Work.
- Providing and recording relevant training.
- Monitoring and reviewing our systems; using our experience of operating these arrangements we aim to make improvements to the way we manage these risks.

The personnel responsible for the above measures are identified within the Responsibility Table of our Health and Safety Policy.

Safety Arrangement 3-9

ACCESS, EGRESS, STAIRS AND FLOORS

Action Plan

To protect the health, safety and welfare of our workforce while at work and others who come onto our premises from the risk of injury due to slips, trips and falls we need to;

1. Consider the nature of our premises and the way we work to identify areas where badly designed or maintained access and exit routes, stairs and floors could create access and egress problems or otherwise obstruct movement leading to employees and others slipping, tripping or falling.
2. Identify the control measures already in place and any additional measures that may be required.
3. Consider issues including;
 - a. Steep stairs, handrails.
 - b. Ramps
 - c. Changes in floor levels
 - d. Potholes in floors and yard areas.
 - e. Blind corners
 - f. Wet and slippery floors
 - g. Highly polished floors
 - h. Trailing cables.
 - i. Rubbish.
4. Keep a written record of significant risk assessments and the control measures and systems of work adopted.
5. Make sure that Managers and Supervisors understand the procedures and arrangements. Consider whether they need any training.
6. Explain our system and arrangements to the workforce. Ensure they are understood and provide further training where necessary.
7. Implement the procedure and ensure that it is followed in practice.
8. Monitor and review the operation of this procedure from time to time and after any incident involving access, egress, stairs or floors, making changes to the procedure identified as necessary or beneficial.

Advice and guidance on the control of access, egress, stairs and floors can be found in Guidance Note 3-9.

Safety Arrangement 3-11

WORKPLACE SIGNS

Where it is appropriate we have a legal duty to display safety signs to warn our workers and others of hazards that may be present in our workplace.

We do this by:

- Nominating senior staff members to consider and identify where we need to use safety signs.
- Identifying and implementing procedures for the purchase and installation of signs.
- Ensuring that signage is adequate for its purpose and it is maintained and checked.
- Ensuring that assessments of our requirements are made by competent, trained personnel.
- Ensuring that workplace signs are adhered to.
- Providing and recording relevant training.
- Monitoring and reviewing our systems; using our experience of operating these arrangements we aim to make improvements to the way we manage the use of safety signs.

The personnel responsible for the above measures are identified within the Responsibility Table of our Health and Safety Policy.

WORKPLACE SIGNS

Action Plan

To protect the health, safety and welfare of our employees and others from the hazards and risks present in our workplace we need to use safety signs as a way of warning personnel that those hazards exist. We need to;

1. Identify where on our worksite hazards exist that need to be marked with warning signs.
2. Identify signs already in place and any additional signs that may be required.
3. Consider, as part of our assessment, issues such as;
 - a. Where prohibition signs should be used.
 - b. Where signs should be used as a caution.
 - c. Where signs should be used to require positive action.
 - d. Where signs are required to indicate a mandatory action.
 - e. Whether signs are made, coloured and displayed according to legal requirements.
 - f. Replacement of damaged signs – now and in the future.
4. Involve our workforce in developing these arrangements and systems.
5. Keep a written record of assessments and decisions made.
6. Make sure that Managers and Supervisors understand the procedures and arrangements. Consider whether they need any training.
7. Explain decisions to the workforce. Ensure they are understood and provide further training where necessary.
8. Implement the procedure and ensure that it is followed in practice.
9. Monitor and review the operation of this procedure and the provision of signs from time to time.

Advice on safety signs can be found in Guidance Note 3-1 1.

Safety Arrangement 3-18

THE CONTROL AND MANAGEMENT OF HEALTHCARE WASTE

We have a duty to ensure that we effectively and safely control and manage waste generated in the healthcare of people and animals. We have to consider how the waste is created, handled and disposed of so that our workforce and any others who might be affected are not at risk to their health, safety or welfare.

We do this by:

- Nominating senior staff members to control the way healthcare waste is managed and handled on a day to day basis whilst on our premises.
- Nominating senior staff members to arrange for and control the disposal of healthcare and other waste from our premises to minimise risk and in accordance with environmental legislation.
- Assessing the risks to our workers from the handling and disposal of healthcare waste.
- Developing and implementing policies, procedures, Safe Systems of Work and control measures relevant to the control of healthcare waste including measures necessary to ensure compliance with environmental legislation.
- Ensuring that healthcare waste disposal is undertaken by competent approved personnel, using the correct personal protective equipment.
- Ensuring that the safest means of disposal is used to protect the environment.
- Employees and others adhering to procedures, control measures and Safe Systems of Work.
- Providing and recording relevant training.
- Regular monitoring and review of our arrangements and facilities to ensure that we continue to manage and dispose of healthcare waste without risks to health or safety.

The personnel responsible for the above measures are identified within the Responsibility Table of our Health and Safety Policy.

Safety Arrangement 3-18

THE CONTROL AND MANAGEMENT OF HEALTHCARE WASTE

Action Plan

To ensure our workforce and any others who might be affected are not at risk to their health, safety or welfare from the way we handle and dispose of healthcare waste we need to:

1. Identify where we create healthcare waste in the course of our business.
2. Assess the hazard that healthcare waste may present to people at work and others and the risks they face from it.
3. Consider issues relevant to our workplace including;
 - a. Whether the waste is particularly hazardous because it contains chemical or pharmaceutical products.
 - b. Whether the waste is hazardous because it is or contains infectious biological agents.
 - c. Whether the waste contains sharps or is flammable.
 - d. Can any of the waste be treated as offensive rather than healthcare waste?
 - e. How is it stored in the workplace? Are containers colour coded appropriately?
 - f. How is it moved about the workplace?
 - g. How is it stored outside the premises? Is it secure? Can the public gain access?
 - h. Is the way we store waste an invitation to trouble?
 - i. Have we considered waste generated during community care?
 - j. How can we make the process easier and safer for our workers?
 - k. Whether any of our workers should be immunised?
4. Consider how environmental legislation and requirements might impact on health and safety procedures.
5. Involve workers in developing a healthcare waste control policy and procedures based on these considerations and around their professional training.
6. Keep a written record of policies, significant risk assessments, the control measures and systems of work adopted.
7. Make sure that Managers and Supervisors understand the procedures and arrangements. Consider whether they need any specific instruction or training.

8. Explain our system and arrangements to the workforce. Ensure they are understood and provide further training where necessary.
9. Implement procedures and ensure that they are followed in practice.
10. Monitor and review the operation of our procedures in consultation with the workforce from time to time, making changes identified as necessary or beneficial.

Advice and guidance on the control of healthcare waste can be found in Guidance Note 3-18.

Safety Statement 4-1

ELECTRICAL SAFETY

We have a duty to protect our employees and other people who use our premises from the risk of electrical injury caused by our electrical installations, our use of fixed equipment and our use of portable electrical appliances.

We do this by:

- Nominating senior staff members to ensure the safety of our electrical installation equipment and portable appliances.
- Making an assessment of the risks from electrical installations, fixed equipment and portable appliances.
- Developing and implementing procedures, control measures, policies and Safe Systems of Work.
- Ensuring that any work carried out on our electrical installation, equipment and appliances is carried out by competent, accredited electrical engineers.
- Providing and using personal protective equipment where appropriate.
- Regular inspection by competent accredited electrical engineers.
- Managing our activities to ensure that employees and others use the control measures provided and follow our policies, procedures and Safe Systems of Work.
- Providing relevant training and keeping training records.
- Monitoring and reviewing our systems; using our experience of operating these arrangements we aim to make improvements to the way we manage electrical safety.

The personnel responsible for the above measures are identified within the Responsibility Table of our Health and Safety Policy.

Safety Statement 4-1

ELECTRICAL SAFETY

Action Plan

To protect workers and others from the risks from using fixed and portable electrical

equipment we need to:

1. Consider our activities and identify where and when workers may be exposed to risks to their health and safety from fixed or portable electrical equipment.
2. Assess the risks from that exposure to fixed and portable electrical equipment, identifying control measures in place and any additional measure that may be required to avoid risk.
3. Consider relevant issues including:
 - a. The competence of employees or contractors who install or maintain electrical equipment.
 - b. Inspection of fixed electrical installations as prescribed by the IEE Wiring Regulations (1 7th edition) BS 7671.
 - c. The maintenance of electrical installations between inspections.
 - d. The maintenance and inspection of portable electrical equipment.
 - e. Using battery powered hand tools.
 - f. Whether hydraulic or pneumatic tools might be safer.
 - g. Reducing the operating voltage.
 - h. Residual current devices.
 - i. Use in flammable or explosive areas; use in wet and adverse conditions.
 - j. Equipment used by mobile workers.
 - k. Use of trailing cables.
4. Purchase robust equipment suitable for the environment in which it is to be used.
5. Arrange for the routine testing and inspection of portable electrical equipment.
6. Develop a procedure based on these considerations.
7. Keep a written record of significant risk assessments and the control measures and systems of work adopted.
8. Make sure that Managers and Supervisors understand the procedures and arrangements. Consider whether they need any training.
9. Explain our procedures and arrangements to our workforce. Ensure they are understood and provide training where necessary.
10. Implement the procedure and ensure that it is followed in practice.

11. Monitor and review the operation of this procedure from time to time and after any electrical incident, making changes identified as beneficial or necessary.

Information and advice on the use of fixed and portable electrical equipment can be found in our Guidance Note 4-1 – Electrical Safety.

Safety Arrangement 4-2

THE PROVISION, USE AND MAINTENANCE OF WORK EQUIPMENT

We have a duty to protect our employees and other people who use our premises from the health and safety risks associated with the provision and use of work equipment.

We do this by:

- Nominating senior staff members to consider the health and safety issues surrounding any new equipment that we obtain and the equipment that we use in the course of our business.
- Making an assessment of the risks from work equipment when in use and during its maintenance.
- Developing and implementing procedures, control measures, policies and Safe Systems of Work.
- Ensuring that any work carried out on work equipment is carried out by competent workers or competent contractors.
- Providing and using personal protective equipment where appropriate.
- Regular maintenance and servicing.
- Statutory inspections by competent accredited engineers and surveyors where required.
- Managing our activities to ensure that employees and others use the control measures provided and follow our policies, procedures and Safe Systems of Work.
- Providing relevant training and keeping training records.
- Monitoring and reviewing our systems; using our experience of operating these arrangements we aim to make improvements to the way we manage the provision and use of work equipment.

The personnel responsible for the above measures are identified within the Responsibility Table of our Health and Safety Policy.

Safety Arrangement 4-2

THE PROVISION, USE AND MAINTENANCE OF WORK EQUIPMENT

Action Plan

To protect workers and others from the risks from work equipment we need to:

1. Consider our activities and identify where and when workers may be exposed to risks to their health and safety from our use of existing equipment.
2. Consider the implications for the health and safety of our workforce when purchasing or looking to purchase new equipment.
3. Assess the risks from any such exposure to work equipment, identifying control measures in place and any additional measure that may be required to avoid risk.
4. Consider relevant issues including:
 - a. What risks to health and safety might be created?
 - b. Do any parts look dangerous?
 - c. Do the guards adequately protect against the risk? Do they conform to the current BS/IS/EN standard?
 - d. Do fumes / dust escape from the equipment?
 - e. Is it used in flammable or explosive areas or in wet and adverse conditions? Is it designed and protected for such use?
 - f. Can you understand the controls? Are they in English?
 - g. Is it excessively noisy or is there excessive vibration?
 - h. Are there any special maintenance requirements?
 - i. Are parts that need maintenance easily accessible?
 - j. Does any part get very hot or cold?
 - k. Are there any live electrical parts exposed?
 - l. Are the supplied manufacturer's instructions clear and comprehensive?
5. Arrange for work equipment to be routinely serviced and maintained and for statutory inspections where required.
6. Keep a written record of significant risk assessments and the control measures and any systems of work or procedures adopted.
7. Implement the procedures and arrangements making sure that Managers and Supervisors understand them. Consider whether they need any training.
8. Explain our procedures and arrangements to our workforce. Ensure they are understood and followed in practice. Provide training where necessary.

9. Monitor and review the operation of this procedure from time to time and after any incident, making changes identified as beneficial or necessary.

Information and advice on the use of fixed and portable electrical equipment can be found in our Guidance Note 4-2 – The Provision, Use and Maintenance of Work Equipment.

Safety Arrangement 4-4

OFFICE EQUIPMENT

We have a duty to protect our employees and other people who use our premises from the risks associated with the use of office equipment.

We do this by:

- Nominating senior staff members to consider the safety implications of our use of office equipment.
- Making an assessment of the risks from our use of office equipment.
- Developing and implementing procedures, control measures, policies and Safe Systems of Work.
- Ensuring that office equipment is properly maintained.
- Managing our activities to ensure that employees and others use the control measures provided and follow our policies, procedures and Safe Systems of Work.
- Providing relevant training and keeping training records.
- Monitoring and reviewing our systems; using our experience of operating these arrangements we aim to make improvements to the way we manage the safety of office equipment.

The personnel responsible for the above measures are identified within the Responsibility Table of our Health and Safety Policy.

Safety Arrangement 4-4

OFFICE EQUIPMENT

Action Plan

To protect workers and others from the risks of using office equipment we need to:

1. Consider our activities and identify where and when workers may be exposed to risks to their health and safety from the use of office equipment.
2. Assess the risks from that use of office equipment, identifying control measures already in place and any additional measure that may be required to avoid risk.
3. Consider relevant issues including:
 - a. The competence and training of workers who use office equipment.
 - b. Who does what when the equipment goes wrong?
 - c. Are any young workers likely to use office equipment? Are any special precautions needed?
 - d. Are manufacturers' instructions followed?
 - e. The maintenance of office equipment.
 - f. The location of office equipment.
4. Purchase robust equipment suitable for the work and environment in which we require it to be used.
5. Develop a procedure based on these considerations.
6. Keep a written record of any significant risk assessments and the control measures and systems of work adopted.
7. Make sure that Managers and Supervisors understand the procedures and arrangements. Consider whether they need any training.
8. Explain our procedures and arrangements to our workforce. Ensure they are understood and provide training where necessary.
9. Implement the procedure and ensure that it is followed in practice.
10. Monitor and review the operation of this procedure from time to time and after any accident or incident, making changes identified as beneficial or necessary.

Information and advice on the use of fixed and portable office equipment can be found in our Guidance Note 4-4 – Office Equipment.

Safety Arrangement 4-5

STORAGE OF CHEMICAL SUBSTANCES and AGENTS

We have a duty to protect our workers and others from the potential hazards and risks present as a result of the storage of chemical substances at our workplace.

We do this by:

- Nominating senior staff members to identify the chemical substances used and their storage requirements.
- Developing and implementing risk assessments, procedures, Safe Systems of Work and control measures to minimise risk within our work premises.
- Implementing the procedures, Safe Systems of Work and control measures.
- Ensuring that the storage, containment and exhaust ventilation arrangements are adequate for their purpose, as defined in prescribed legislation.
- Ensuring that the management of the policy, procedures, Safe Systems of Work and control measures relating to chemical substances are undertaken by competent, trained personnel.
- Providing and using personal protective equipment.
- Managing our activities to ensure that employees and others use the control measures provided and follow our policies, procedures and Safe Systems of Work.
- Providing and recording relevant training.
- Monitoring and reviewing our systems; using our experience of operating these arrangements we aim to make improvements to the way we manage the risks from stored chemical substances.

The personnel responsible for the above measures are identified within the Responsibility Table of our Health and Safety Policy.

Safety Arrangement 4-5

STORAGE OF CHEMICAL SUBSTANCES and AGENTS

Action Plan

To protect our workforce and others from the potential hazards and risks present as a result of the storage of chemical agents at our workplace we need to;

1. Make an inventory of every chemical substance, including its location and the maximum quantities expected, stored on our premises.
2. Assess the potential risks from the storage of each of those substances and identify those which are hazardous and those which are not.
3. Assess the hazardous chemical substances for the risks that they pose to health and safety because of the quantities that we store and / or the way that they are stored.
4. Identify the control measures that we should adopt.
5. Consider matters including;
 - a. What hazardous chemical substances do we store?
 - b. In what quantity?
 - c. Where?
 - d. Are they stored in accordance with SDS recommendations and published guidance?
 - e. Are the storage arrangements suitable?
 - f. Have we identified and separated incompatible chemical agents? How can we improve our storage arrangements?
 - g. Is our workforce aware of hazards and risks?
6. Record details of our assessments, the results and any controls subsequently introduced.
7. Prepare a detailed statement of how we control the risks.
8. Make sure that Managers and Supervisors understand the procedures and arrangements. Consider whether they need any training.
9. Explain our system and arrangements to the workforce. Ensure they are understood and provide further training where necessary.
10. Implement the procedure and ensure that it is followed in practice.
11. Monitor and review the operation of this procedure from time to time and whenever hazardous substances give rise to incident, injury or ill health, making changes to the procedure identified as necessary or beneficial.

Advice on the storage of chemical substances can be found in Guidance Note 4-5.

Safety Arrangement 4-8

SLIPS, TRIPS AND FALLS

We have a duty to protect our workers and others visiting our premises from the risks of slipping, tripping and falling.

We meet this duty by:

- Nominating senior staff members to be responsible for monitoring and improving workplace pedestrian safety.
- Identifying all the potential causes of slips, trips and falls and assessing the risk.
- Developing and implementing procedures and control measures.
- Ensuring that pedestrian routes are fit for the purpose, that they are routinely maintained and checked.
- Ensuring that any risk assessments or safety inspections are carried out by competent and trained personnel.
- Adhering to our risk assessments, procedures and control measures.
- Providing wherever possible segregated traffic routes and adequate signage.
- Providing and recording relevant training.
- Regular monitoring and review of our arrangements to ensure that arrangements we have made remain sufficient to control the potential risk.

The personnel responsible for the above measures are identified within the Responsibility Table of our Health and Safety Policy.

Safety Arrangement 4-8

SLIPS, TRIPS AND FALLS

Action Plan

To protect our workforce and others who visit our premises from the risk of accidents caused by slips, trips and falls we need to;

1. Identify where on our worksite there are potential areas for slips, trips or falls accidents.
2. Assess the hazards in each of those areas and the risks that people at work and others may face.
3. Identify existing controls and any additional measures that we should be taking.
4. Consider issues including;
 - a. Floor surfaces.
 - b. The environment.
 - c. Footwear.
 - d. Contamination.
 - e. Obstacles and obstructions.
 - f. Cleaning regimes.
 - g. People – human factors.
5. Involve workers in developing a procedure or arrangements based on these considerations.
6. Keep a written record of significant risk assessments and the control measures and systems of work adopted.
7. Make sure that Managers and Supervisors understand the procedures and arrangements. Consider whether they need any training.
8. Explain our system and arrangements to the workforce. Ensure they are understood and provide further training where necessary.
9. Implement the procedure and ensure that it is followed in practice.
10. Monitor and review the operation of this procedure from time to time and after any report of a dangerous incident or of a person suffering injury or due to slipping or tripping and falling on our premises or while at work making changes identified as necessary or beneficial.

Advice and guidance on slips, trips and falls can be found in Guidance Note 4-8.

Safety Arrangement 4-20

WORK AT HEIGHT

We have a duty to ensure the health, safety and welfare of our employees and others against the risks involved in working at height.

We do this by:

- Nominating senior staff members to be responsible for identifying and managing work at height.
- Assessing the risks to our workers and others from the risks involved in working at height.
- Developing and implementing procedures, control measures and Safe Systems of Work.
- Ensuring that access and other equipment provided for work at height is fit for the purpose, correctly installed, used and maintained, and checked at the correct frequency.
- Ensuring that risk assessments and inspections are carried out by competent and trained personnel.
- Ensuring that control measures are installed and managed by competent trained personnel.
- Following our risk assessments, procedures, control measures and Safe Systems of Work in practice.
- Providing and recording training.
- Monitoring and reviewing our systems; using our experience of operating these arrangements we aim to make improvements to the way we manage the risks from work at height.

The personnel responsible for the above measures are identified within the Responsibility Table of our Health and Safety Policy.

WORK AT HEIGHT

Action Plan

To ensure the safety of our employees and others whilst working in areas where they could be at risk because they are working at height we need to;

1. Assess our work activity to identify where and when workers or others may be exposed to hazard and risk due to work at height.
2. Where a risk is identified make a risk assessment for the task.
3. Involve the workforce in these assessments and in the identification of control measures to eliminate or reduce risk. Liaise with clients and others where necessary.
4. Identify the control measures already in place and any additional measures that may be required. Refer to manufacturers' guidance, trade guidance and British, European or Irish Standards etc.
5. Consider among other issues;
 - a. All work above ground where there is a risk of falling.
 - b. Occasional job tasks as well as routine tasks.
 - c. Does the work have to be done at height?
 - d. Use of appropriate access equipment.
 - e. Weather conditions.
 - f. Competency of workers.
 - g. Condition of ladders and access equipment.
 - h. Unexpected tasks e.g. leaking roof, overflowing gutter.
 - i. Safety nets.
 - j. Personal protective systems.
6. Develop procedures, programmes and practices tailored to our workplace.
7. Make sure that Managers and Supervisors understand the procedures and arrangements. Consider whether they need any training.
8. Explain these arrangements to the workforce. Ensure they are understood and provide training where necessary.
9. Implement the procedure and ensure that it is followed in practice.
10. Monitor and review the operation of this procedure from time to time and following any injury due to work at height, making changes to the procedure identified as necessary or beneficial.

Advice and guidance on health and safety during work at height can be found in Guidance Note 4-20.

Safety Arrangement 4-21

ACCESS EQUIPMENT

We need to ensure the safety of our workforce and others when using access equipment for tasks that involve work at height.

We do this by:

- Nominating senior staff members to manage work at height, our use of access equipment and to identify and manage the action we need to take.
- Assessing the risks to employees and others from access equipment and working at height.
- Developing and implementing control measures, procedures and Safe Systems of Work.
- Ensuring employees and others adopt the control measures provided and follow the developed procedures and Safe Systems of Work.
- Training employees to safely use access equipment and work at height.
- Using only trained employees to install or erect access equipment.
- Purchasing suitable access equipment.
- Regular inspection by competent engineers.
- Providing and recording relevant training.
- Monitoring and reviewing our systems; using our experience of operating these arrangements we aim to make improvements to the way we manage the risks from access equipment and work at height.

The personnel responsible for the above measures are identified within the Responsibility Table of our Health and Safety Policy.

ACCESS EQUIPMENT

Action Plan

To ensure the safety of our employees and others whilst working at height using access equipment we need to;

1. Assess our work activity to identify where and when workers or others may be exposed to risk whilst working at height using access equipment.
2. Where risks are identified carry out an assessment of the risks to health and safety in those tasks and situations.
3. Involve the workforce in these assessments and in the identification of control measures.
4. Identify the control measures already in place and any additional measures that may be required. Refer to manufacturers' guidance, trade guidance and British, European or Irish Standards etc.
5. Consider among other issues;
 - a. The nature of the work at height task.
 - b. The most appropriate means of access.
 - c. Suitability – ground conditions, slopes and access.
 - d. The length of the task.
 - e. If equipment is to be hired could the task in hand be combined with other work at height for efficiency?
 - f. Do staff have the skills and competence to use powered access equipment?
 - g. Training.
 - h. Supervision.
 - i. Personal Protective Equipment.
 - j. Maintenance of access equipment.
6. Develop procedures, programmes and practices tailored to our workplace.
7. Make sure that Managers and Supervisors understand the procedures and arrangements. Consider whether they need any training.
8. Explain these arrangements to the workforce. Ensure they are understood and provide further training where necessary.
9. Implement the procedure and ensure that it is followed in practice.
10. Monitor and review the operation of this procedure from time to time and whenever anyone is injured while using access equipment to work at height, making changes to the procedure identified as necessary or beneficial.

Advice and guidance on health and safety in the use of access equipment can be found in Guidance Note 4-21.

Safety Arrangement 4-31

OCCUPATIONAL ROAD SAFETY

We have a duty to continue to manage, so far as we can, the health, safety and welfare of our workforce when they are away from our premises and travelling in the course of their work.

We do this by:

- Nominating senior staff members to identify and manage the potential hazards to our workforce when driving in the course of our business.
- Assessing the risks to our workforce from driving in the course of our business.
- Developing and implementing policies and procedures.
- Ensuring that the vehicles are suitable and sufficient for their intended use and that they are maintained at their specified service intervals or when faults are identified.
- Ensuring that all vehicles are properly insured, taxed and Ministry of Transport tested, prior to road use.
- Ensuring that any risk assessments are undertaken by competent and trained personnel.
- Employees and Supervisors following our policies and procedures.
- Providing and recording relevant training.
- Monitoring and reviewing our systems; using our experience of operating these arrangements we aim to make improvements to the way we manage the risks associated with occupational road use.

The personnel responsible for the above measures are identified within the Responsibility Table of our Health and Safety Policy.

OCCUPATIONAL ROAD SAFETY

Action Plan

To ensure the safety of our employees whilst travelling by road in the course of our business (and to protect others who might be affected by their actions) from the hazards and risks surrounding occupational road safety we need to;

1. Assess our work activity to identify where and when workers may be exposed to hazards and risks on account of occupational road use.
2. Assess specific occupational road use risks to our workforce.
3. Involve the workforce in these assessments and in the identification of appropriate control measures.
4. Identify the control measures already in place and any additional measures that may be required. Refer to government and road safety organisations' published guidance.
5. Consider among other issues;
 - a. Working Time regulations.
 - b. Statutory limitation of commercial vehicle drivers' hours.
 - c. The length of the working day when hours driving to and from a job, visit, training course etc. is added to the time spent on the task.
 - d. Schedules that don't require excessive speed and allow time for rest breaks.
 - e. Weather conditions.
 - f. Allowance for rest breaks.
 - g. Policy on overnight stays.
 - h. Advanced driver training.
 - i. Suitability of vehicles.
 - j. Vehicle maintenance.
6. Develop procedures, programmes and practices tailored to our workplace.
7. Make sure that Managers and Supervisors understand the procedures and arrangements. Consider whether they need any training.
8. Explain these arrangements to the workforce. Ensure they are understood and provide further training where necessary.
9. Implement the procedure and ensure that it is followed in practice.
10. Monitor and review the operation of this procedure from time to time and following any incident or injury related to occupational road use, making changes to the procedure identified as necessary or beneficial.

Advice and guidance on occupational road safety can be found in Guidance Note 4-31.

Safety Arrangement 5-4

INFECTION CONTROL

We have a duty to protect the safety, health and welfare of our workforce and others who enter our premises from the risk of work acquired infections.

We do this by;

- Nominating senior staff members to manage the spread of infection and to reduce the risks posed.
- Making an assessment of the risks to our workforce and visitors to our workplace of acquiring a work related infection.
- Developing and implementing control measures, procedures, policies and Safe Systems of Work.
- Ensuring that the management of the control measures, procedures and Safe Systems of Work relating to the control of work-related infection is carried out by competent, trained personnel.
- Providing and using personal protective equipment.
- Managing our activities to ensure that employees and others use the control measures provided and follow our procedures and Safe Systems of Work.
- Providing and recording relevant training.
- Undertaking Health Surveillance where this is necessary.
- Monitoring and reviewing our systems; using our experience of operating these arrangements we aim to make improvements to the way we manage the risks of work-related infection.

The personnel responsible for the above measures are identified within the Responsibility Table of our Health and Safety Policy.

Safety Arrangement 5-4

INFECTION CONTROL

Action Plan

To protect workers and others from the risk of work acquired infection we need to;

1. Consider our activities and identify where and when workers and others may be exposed to infectious agents.
2. Risk assess that work identifying the tasks and people who are at risk of a work-related infection.
3. Consider if exposure can be eliminated or whether it can be reduced by restricting access to certain areas to a limited number of people.
4. Identify any control measures already in place and any additional measures that may be required to avoid or reduce risk.
5. Consider issues including;
 - a. Direct physical contact with infectious agents.
 - b. Contact with waste materials - direct, indirect and accidental contact.
 - c. Activities involving skin piercing - intentional and unintentional.
 - d. Contact with contaminated sharp objects.
 - e. Work in areas contaminated with waste.
 - f. Work in cleaning contaminated materials and equipment.
 - g. Are any groups or individual workers at particular risk?
 - h. Is health surveillance required? If yes, at what level?
 - i. Could personal protective equipment give additional protection?
6. Keep a written record of our risk assessments and the control measures and systems of work we adopt.
7. Explain these arrangements to our workforce. Ensure they are understood.
8. Provide training where required and information for staff nominated with responsibility.
9. Implement the procedure and ensure that it is followed in practice.
10. Report cases of work-related infection which result in a worker being unfit for work and which are confirmed by a medical practitioner to the Enforcing Authority.
11. Monitor and review the operation of this procedure from time to time and after any identified case of infection or repeated pattern of absence from work, make changes identified as necessary or beneficial.

Information and advice on the control of Infection can be found in our Guidance Note 5-4 – Infection Control.

Safety Arrangement 5-5

WORKING TIME, NIGHT WORK AND SHIFT WORKING

We have a duty to take account of the hazards and risk of long working hours, night and shift work and to ensure the health and safety of members of our workforce who work at night and on shifts.

We do this by:

- Nominating senior staff members to coordinate and manage hours of work and safe shift working activity on site.
- Identifying the hazards and risks that shift working may pose to our workforce.
- Developing and implementing strategies, procedures etc.
- Ensuring that the development of the strategies and procedures relating to shift working are undertaken by competent, trained personnel.
- Ensuring that Managers, employees and others follow our procedures and rules.
- Providing and recording relevant training.
- Monitoring hours of work and shift work patterns.
- Monitoring and reviewing our systems; using our experience of operating these arrangements we aim to make improvements to the way we manage the risks from shift working.

The personnel responsible for the above measures are identified within the Responsibility Table of our Health and Safety Policy.

Safety Arrangement 5-5

WORKING TIME, NIGHT WORK AND SHIFT WORKING

Action Plan

To set up a system for taking account of the hazards and risk of long working hours, night and shift work and to ensure the health and safety of members of our workforce, including those who work at night and on shifts we need to;

1. Ensure that the people nominated with responsibility for these arrangements have the knowledge and experience to operate the system effectively.
2. Provide suitable training for those who don't.
3. Create the system and make sure it is known to all members of our workforce.
4. Consider as part of the system issues including;
 - a. The well being of workers employed to work on shift systems which start or finish beyond the normal working day.
 - b. Whether any of our workers are particularly vulnerable, e.g. young people, older people, new and expectant mothers.
 - c. Whether health surveillance may be necessary or desirable.
 - d. Whether early finishes or late starts put workers at additional risk from break-in or robbery.
 - e. First aid cover, emergency cover.
 - f. Security, lighting.
 - g. Senior management availability.
 - h. Welfare facilities, temperature, food, drink etc.
 - i. Communications - shift to shift issues and problems.
 - j. Shift handover arrangements.
5. Involve workers in developing procedures based on these considerations.
6. Keep a written record of significant risk assessments, the control measures and systems of work adopted.
7. Make sure that Managers and Supervisors understand the procedures.
Consider whether they need any training.
8. Explain these arrangements to our workforce. Ensure they are understood and provide training where necessary.
9. Implement the procedure and ensure that it is followed in practice.
10. Monitor and review the operation of this procedure from time to time and after any report of a worker developing or suffering ill health as a result of long working hours or shift work, make changes identified as necessary or beneficial.

Advice and guidance on working time, night work and shift working can be found in our Guidance Note 5-5 – Shift Working.

Safety Arrangement 5-6

WRULD (WORK RELATED UPPER LIMB DISORDERS)

We have a duty to protect our workforce from the risk of Work Related Upper Limb Disorders (WRULD) which could arise from our work activities.

We do this by:

- Nominating senior staff members to coordinate the way we deal with the risk of WRULDs.
- Developing and implementing control measures, strategies and procedures etc.
- Ensuring that the development of our control measures, procedures and strategies is undertaken by competent, trained personnel.
- Providing and using mechanical aids where appropriate.
- Employees and others adhering to our procedures and arrangements and using any control measures provided.
- Providing and recording relevant training.
- Monitoring and reviewing our systems; using our experience of operating these arrangements we aim to make improvements to the way we manage the risks of work related upper limb disorders.

The personnel responsible for the above measures are identified within the Responsibility Table of our Health and Safety Policy.

Safety Arrangement 5-6

WRULD (WORK RELATED UPPER LIMB DISORDERS)

Action Plan

To protect the health, safety and welfare of our workers from the risk of work related upper limb disorders we need to;

1. Consider the arrangements we have in place to protect the health, safety and welfare of workers who perform repetitive tasks.
2. Assess the specific hazards and risks to the health, safety and welfare of workers performing repetitive tasks.
3. Identify any workers with particular health issues that make them particularly susceptible to WRULD.
4. Identify any control measures in place and any additional measures that may be required.
5. Consider among other relevant issues;
 - a. The job
 - b. Mechanical aids that are readily available
 - c. Repetitive bending, twisting, reaching movements, repetitive hand and wrist movements
 - d. Postural matters
 - e. Temperature and drafts
 - f. Workstation layout, tools and jigs, ergonomic design
 - g. Physical attributes of the worker
 - h. Seating
 - i. Job rotation
 - j. Rest breaks away from the workstation
6. Involve workers in developing procedures based on these considerations.
7. Keep a written record of significant risk assessments, the control measures and systems of work adopted.
8. Make sure that Managers and Supervisors understand the procedures.
Consider whether they need any training.
9. Explain these arrangements to our workforce. Ensure they are understood and provide training where necessary.
10. Implement the procedure and ensure that it is followed in practice.
11. Report any incidence of medically diagnosed work related upper limb disorder to the Enforcing Authority.

12. Monitor and review the operation of this procedure from time to time and after any report of a worker developing or suffering from a WRULD, making changes identified as necessary or beneficial.

Information and advice on the control of Work Related Upper Limb Disorder can be found in our Guidance Note 5-6 – Work Related Upper Limb Disorders.

Safety Arrangement 5-9

MANUAL HANDLING

We have a duty to ensure the safety, health and welfare of our employees and others who enter our premises from the risks present in manual handling activities.

We do this by:

- Nominating senior staff members to manage and identify load or lifting hazards.
- Making an assessment of the risks from manual handling to our workforce.
- Developing and implementing procedures and systems of work to reduce the risks from manual handling operations in the course of our business.
- Ensuring that any Manual Handling Risk Assessments are undertaken by competent, trained personnel.
- Eliminating the need for manual handling through the introduction of mechanical handling equipment or other alternatives where this is reasonably practicable.
- Regularly inspecting the premises to identify any new processes, personnel or changes to the building's structure which would trigger the need for re-assessment.
- Employees and others adhering to the contents of procedures, control measures and Safe Systems of Work.
- Providing and recording job-based training for employees with manual handling tasks.
- Monitoring and reviewing our systems; using our experience of operating these arrangements we aim to make improvements to the way we manage the risks from manual handling.

The personnel responsible for the above measures are identified within the Responsibility Table of our Health and Safety Policy.

Safety Arrangement 5-9

MANUAL HANDLING

Action Plan

To protect our workforce and others from the risk of injury while manual handling loads we need to;

1. Assess the risks to our workforce from handling loads. This includes lifting and carrying as well as pushing and pulling loaded containers.
2. Have a nominated Manager to lead the process.
3. Consider;
 - a. What we have to move - its size and shape.
 - b. The weight.
 - c. The frequency.
 - d. Which of our workforce is involved? Do some handle loads more frequently than others?
 - e. Can we reduce the need for movement? Are there mechanical aids we could use? Can we use them?
 - f. Can we adapt our processes to reduce the risk?
 - g. Have our workforce been trained in manual handling techniques for the products and goods that they handle in the course of their work?
 - h. Where team lifting is employed have the workers been trained in the same system?
 - i. Are the floors suitable and maintained for the work that goes on?
 - j. Are there extremes of temperature?
 - k. Are any groups or individual workers at particular risk?
 - l. Is health surveillance required? If yes at what level?
4. Keep a written record of significant risk assessments and the control measures and systems of work adopted.
5. Involve workers in developing a procedure based on these considerations.
6. Make sure that Managers and Supervisors understand the procedures and arrangements. Consider whether they need any training.
7. Explain these arrangements to our workforce. Ensure they are understood and provide further training where necessary.
8. Implement the procedure and ensure that it is followed in practice.
9. Monitor and review the operation of this procedure from time to time and after any ill health or back injury, making changes identified as necessary
10. Report cases of injury caused by manual handling that result in a worker suffering a major injury or being unfit for normal work for more than 3 days to the Enforcing Authority.

A template for Manual Handling Risk Assessments is in our **Risk Management Pack**.

Information and advice about health and safety on this subject can be found in our Guidance Note 5-9 – Manual Handling.

Safety Arrangement 5-11

DISPLAY SCREEN EQUIPMENT

We have a duty to protect the safety, health and welfare of our workforce from the risk involved in the use of display screen equipment (DSE).

We do this by:

- Nominating senior staff members to identify and reduce risks from the use of display screen equipment.
- Assessing the risks from display screen equipment to each member of our workforce who uses them.
- Developing and implementing control measures, policies and Safe Systems of Work.
- Ensuring that the management of the policy, procedures, Safe Systems of Work and control measures relating to the use of display screen equipment are undertaken by competent, trained personnel.
- Providing and using personal protective equipment where appropriate.
- Managing our activities to ensure that employees and others use the control measures provided and follow our policies, procedures and Safe Systems of Work.
- Providing and recording relevant training.
- Monitoring and reviewing our systems; using our experience of operating these arrangements we aim to make improvements to the way we manage the risks from display screen equipment.

The personnel responsible for the DSE assessment process and these measures are identified in the Responsibility Table of our Health and Safety Policy.

Safety Arrangement 5-11

DISPLAY SCREEN EQUIPMENT

Action Plan

To protect workers from the risks from display screen equipment we need to:

1. Appoint a member or members of staff to receive training to become a competent and qualified assessor for display screen equipment.
2. Assess our work activity to identify where and when workers use display screen equipment.
3. Ensure all display screen users complete a Self-Assessment Questionnaire which can be found in the Risk Management Pack
4. Identify any workers with health issues that make them particularly susceptible to problems in using display screen equipment.
5. Identify the control measures already in place and any additional measures that may be required.
6. Consider the issues, including;
 - a. Furniture
 - b. Screen size
 - c. Lighting; reflections and glare
 - d. Rest breaks; rotating work activity
 - e. Eye sight tests
 - f. Home and off-site users of display screen equipment
 - g. Self-assessments and follow-up.
7. Keep a written record of all risk assessments, whether self-assessments or assessments by trained assessors and the control measures and systems of work adopted.
8. Make sure that Managers and Supervisors understand the procedures and arrangements. Consider whether they need any training.
9. Explain our system and arrangements to the workforce. Ensure they are understood and provide further training where necessary.
10. Implement the procedure and ensure that it is followed in practice.
11. Report any incidence of reportable ill health caused by the use of display screen equipment to the Enforcing Authorities.
12. Monitor and review the operation of this procedure from time to time and whenever an employee develops a display screen equipment related illness, make changes to the procedure identified as necessary or beneficial.

Advice and guidance on health, safety and welfare in the use of display screen equipment can be found in Guidance Note 5-1 1.

Safety Arrangement 5-16 D

ASBESTOS AT WORK

Duty to Identify, Control and Manage

We have a duty to ensure that the presence of ACMs in our buildings is known and that they are managed so that users of the buildings and contractors working on the buildings are not exposed to the health risks associated with asbestos. We also need to be able to identify, manage and control exposure to asbestos containing materials when we work at customers' worksites.

An asbestos survey carried out on our behalf has shown that asbestos containing materials (ACMs) are present in the building structure.

In the course of our business our workforce is unlikely to come into contact with any asbestos or asbestos containing materials.

We need to control this potential hazard and we do this by;

- Making information about the presence of ACMs on our premises available to our workforce.
- Developing an Asbestos Management Plan.
- Arranging work activities to avoid the disturbance of ACMs.
- Making sure that our workers are trained and able to assess and identify materials that might contain asbestos, and that they know what to do if they come across them.
- Seeking, as a matter of course, information from businesses on whose premises or on whose behalf we work about the potential presence of asbestos containing materials and their Asbestos Management Plan.
- Nominating senior staff members to manage this process and to develop and implement procedures, Safe Systems of Work and control measures.
- Employees and others adhering to the contents of procedures, control measures and Safe Systems of Work.
- Employing competent trained personnel.
- Monitoring and reviewing our systems; using our experience of operating these arrangements we aim to make improvements to the way we manage the risks from asbestos.

The personnel responsible for the asbestos register and all of the above measures are identified within the Responsibility Table of our Health and Safety Policy.

Safety Arrangement 5-16 D

ASBESTOS AT WORK Duty to Identify, Control and Manage

Action Plan

To protect our workforce from the risk of exposure to asbestos from asbestos containing materials whilst at work we need to;

1. Make sure that all ACMs on our worksite are marked and that our workforce is aware of their presence.
2. Develop an Asbestos Management Plan. Explain its contents to our workforce and make it available to any contractors who come onto our premises to work.
3. Ask our clients for an Asbestos Management Plan or similar information, at all other business premises where we work and where asbestos containing materials may be present.
4. In every case we need to assess the risks to our workforce and others. Make sure positive information and a safe system of work are given to our workforce.
5. When developing an Asbestos Management Plan consider:
 - a. Leaving it alone and marking its presence.
 - b. Sealing or protecting it and marking its presence.
 - c. Repairing damaged materials, sealing them and marking their presence.
 - d. Stripping out and removing the ACMs.
6. Make sure that all our trade workers are trained and able to spot potentially asbestos containing materials – especially when working in domestic situations.
7. Authorise our workers to stop work and call for advice when they discover materials that they suspect of containing asbestos.
8. Use licensed contractors for work involving the protection and removal of damaged ACMs.
9. Explain our arrangements to supervisors and workers and inform any person likely to disturb asbestos or ACMs of its location. Ensure they are understood.
10. Provide training where required and information for staff nominated with responsibility.

11. Implement the procedure and ensure that it is followed in practice.
12. Monitor and review the condition of known ACMs from time to time; taking action to deal with any damage that is observed.
13. Amend the asbestos survey whenever asbestos containing materials are removed and if other previously unrecognised ACMs are found.
14. Review the operation of this procedure at least annually.

Information and advice on the control and management of asbestos in buildings can be found in Guidance Note - 5-16.

Safety Arrangement 5-18

STRESS IN THE WORKPLACE

We recognise that we have a duty to take action to reduce and where reasonably practicable to eliminate ill health which is caused by work related stress.

We do this by;

- Nominating senior staff members to consider and manage the issue of work related stress.
- Developing and implementing a policy for identifying and managing work related stress.
- Involving our workforce in the development of this policy and our procedures.
- Providing information about the policy to all workers.
- Training Managers and Supervisors to recognise symptoms of work related stress.
- Ensuring that the policy is adopted and followed.
- Ensuring employees know what to do if they suspect they, or a colleague, are suffering from stress.
- Providing counselling or occupational health services and support.
- Monitoring and reviewing the policy and procedures; using our experience of operating these arrangements we aim to make improvements to the way we manage ill health caused by work related stress.

The personnel responsible for monitoring and implementing the above policy are identified in the Responsibility Table of our Health and Safety Policy.

STRESS IN THE WORKPLACE

Action Plan

To protect our workforce from ill health caused by work related stress we need to;

1. Assess our work activities to identify where and when workers or others may experience unacceptable levels of work related stress.
2. Prepare a stress policy and plan of action when a worker is identified as suffering ill health on account of work related stress.
3. Involve the workforce in developing the policy and plan of action.
4. Identify any control measures already in place and the additional measures or actions that may be required. Refer to published trade guidance and advice.
5. Consider among other issues;
 - a. The outward signs of stress;
 - i. emotional. Fatigue, anxiety, poor motivation in general.
 - ii. cognitive. Making mistakes, having accidents.
 - iii. behavioural. Deteriorating relationships with colleagues, irritability, indecisiveness, absenteeism, excessive smoking, excessive drinking, overeating etc.
 - iv. physiological, Increased complaints about health - headaches, dizziness etc.
 - b. Stress risks assessments.
 - c. Support to an employee who is experiencing stress whether work related or not e.g. following a bereavement or separation.
 - d. The effect of new or changed roles without adequate training.
 - e. The effect of poor communication during times of change
 - f. Excessive workloads, long working hours, unsocial hours.
 - g. Working alone
 - h. Employees having to cover for the poor performance or attendance of colleagues.
 - i. Do employees have developmental opportunities.
 - j. Bullying and harassment by Managers, Supervisors and colleagues.
6. Develop procedures, programmes and practices tailored to our workplace.
7. Make sure that Managers and Supervisors understand the policy and procedure. Consider whether they need any training.

8. Explain these arrangements to the workforce. Ensure they are understood and provide further training where necessary.
9. Implement the policy and procedure and ensure that it is followed in practice.
10. Monitor and review the operation of the policy and procedure from time to time and following any case of ill health caused by work related stress, making changes to the procedure identified as necessary or beneficial.

Further advice and information on work related stress can be found in Guidance Note 5-18.

Safety Arrangement 5-19

AGGRESSION AND VIOLENCE

We recognise that we have a duty to take action to reduce so far as is reasonably practicable the risk of aggression and violence to our workforce whilst at work which arise from clients and/or the nature of our work,

We do this by:

- Nominating senior staff members to consider and manage the issue of aggression and violence at work.
- Developing and implementing a policy for identifying and managing work where there are risks of aggression and violence.
- Involving our workforce in the development of this policy and our procedures.
- Providing information about the policy to all workers.
- Training Managers and Supervisors to recognise work activities and locations where there are higher than normal risks of work related violence and aggression.
- Ensuring that the policy is adopted and followed.
- Ensuring employees know what to do if they suspect they, or a colleague, are under threat of violence or aggression at work.
- Providing counselling or occupational health services and support.
- Monitoring and reviewing the policy and procedures; using our experience of operating these arrangements we aim to make improvements to the way we manage the risk of injury or ill health caused by work violence and aggression.

The personnel responsible for monitoring and implementing the above policy are identified within the Responsibility Table of our Health and Safety Policy.

AGGRESSION AND VIOLENCE

Action Plan

To protect our workforce from injury or ill health caused by violence and aggression at work we need to;

1. Assess our work activities to identify where workers may be subjected to violence or aggression from clients or other people as a result of their work activities.
2. Prepare a policy and plan of action to deal with aggression and violence at work.
3. Involve the workforce in developing the policy and plan of action.
4. Identify any control measures already in place and the additional measures or actions that may be required. Refer to published trade guidance and advice. Take advice from the Police.
5. Consider among other issues;
 - a. Recognising where and why workers may be at risk.
 - b. Systems to allow the reporting of aggression and threats of violence at work.
 - c. Handling incidents – calling the police.
 - d. Security screens and alarms.
 - e. Workplace layout – make it difficult for aggressors to reach workers.
 - f. Lone working and security for workers off site.
 - g. Training workers to identify the early signs of aggressive behaviours and conflict management techniques.
 - h. Counselling.
 - i. Special arrangements for dealing with clients and people known to be aggressive or a risk to staff.
6. Develop procedures, programmes and practices tailored to our workplace.
7. Record details of our assessment, the controls in force and additional measures planned.
8. Make sure that Managers and Supervisors understand the policy and procedure. Consider whether they need any training.
9. Explain these arrangements to the workforce. Ensure they are understood and provide further training where necessary.
10. Implement the policy and procedures and ensure that it is followed in practice.
11. Monitor and review the operation of the policy and procedure from time to time and following any case of injury or ill health caused by aggression or violence at work, making changes to the procedure identified as necessary or beneficial.

Further advice and information on work related aggression and violence can be found in Guidance Note 5-19.

Safety Arrangement 6-3

DRUGS AND MEDICATION

We have a duty to ensure the health and safety of our employees and others from the way that we dispense and store drugs safely within our workplace.

We do this by;

- Nominating senior staff members to consider and manage the safe provision, use and storage of drugs.
- Assessing the risk to our workforce and others generally and more specifically to individual clients.
- Developing and implementing control measures, procedures and Safe Systems of Work.
- Ensuring that the dispensing of drugs is adequately controlled and in accordance with any more specific legislation.
- Providing secure storage facilities for drugs and medication.
- Ensuring that risk assessments are undertaken by competent, trained personnel.
- Employees and others adhering to procedures, control measures and Safe Systems of Work.
- Providing and recording relevant training.
- Monitoring and reviewing our systems; using our experience of operating these arrangements we aim to continuously improve the way we manage health and safety risks associated with our business.

The personnel responsible for the above measures are identified within the Responsibility Table of our Health and Safety Policy.

Safety Arrangement 6-3

DRUGS AND MEDICATION

Action Plan

To ensure the safety of our employees and others from the hazards and risks of drug dispensing and other operations we need to;

1. Assess our work activity to identify where and when workers or others may be exposed to the hazard.
2. Where hazards are identified carry out an assessment of the risks to our workers and others.
3. Involve the workforce in these assessments and in the identification of the appropriate control measures.
4. Identify the control measures already in place and any additional measures that may be required. Refer to professional, NHS and CQC guidance.
5. Consider among other issues;
 - a. Procedures for the receipt, recording, storage, handling, administration and disposal of medicines,
 - b. Storing medicines in a lockable cupboard, access restricted to designated employees.
 - c. Medicines not in secure storage should not be left unattended.
 - d. Maintaining records of all medicines received, administered and leaving the premises.
 - e. Keeping records of current medication for each resident/patient/client (including those self-administering).
 - f. Medicines administered only by the appropriate trained staff member who watches the service user take the medicine and the procedure witnessed by a second qualified member of staff.
 - g. Administration and disposal of Controlled Drugs recorded in a controlled drugs register.
6. Develop procedures, programmes and practices tailored to our workplace.
7. Make sure that Managers and Supervisors understand the procedures and arrangements. Consider whether they need any training.
8. Explain these arrangements to the workforce. Ensure they are understood and provide further training where necessary.
9. Implement the procedure and ensure that it is followed in practice.

10. Monitor and review the operation of this procedure from time to time and following any incident involving drugs or medication, making changes to the procedure identified as necessary or beneficial.

Health and safety information and advice about drugs and medication can be found in Guidance Note 6-3.

Safety Arrangement 7-2

CONTRACTOR CONTROL AND MANAGEMENT

To enhance the safety of our workforce and others, we implement effective methods to reduce the risks presented by the use of contractors and subcontractors.

We ascertain the competence of contractors and subcontractors and ensure our employees and others are adequately protected from the risks posed by situations where these groups are engaged and put systems into place to achieve this.

We do this by:

- Nominating senior staff members to coordinate and plan the selection of suitable, competent contractors or subcontractors.
- Requesting and reviewing the suitability and adequacy of the health and safety documentation submitted by the contractor or subcontractor.
- Checking the competence of contractors and subcontractors.
- Requesting a 'method statement' for the work.
- Ensuring that contractors and subcontractors adhere to their method statement and safety documentation.
- Ensuring that the contractors or subcontractors are aware of the procedures and risk assessments for any of our work processes that may affect them **(Risk Management Pack)**.
- Ensuring that contractors and subcontractors comply with our site specific company rules **(Safety Records)**.
- Ensuring that any equipment used is inspected and tested at frequencies defined within current legislation and evidence of this can be supplied **(Safety Records)**.
- Reviewing our own and contractors' systems.

The personnel responsible for the overseeing of contractors and subcontractors and the measures above are identified within the Responsibility Table of our Health and Safety Policy.

Safety Arrangement 7-2

CONTRACTOR CONTROL AND MANAGEMENT

Action Plan

To ensure the safety of our employees and others when we have contractors working on our premises we need to be sure of their ability to control of health and safety from their work. We need to;

1. Assess the hazards and risks to our workforce that may be created by contractors working on our premises.
2. Assess the hazards and risks to the contractors from their presence on our premises.
3. Involve the workforce and the contractors in these assessments and in the identification of appropriate control measures.
4. Identify the control measures already in place and any additional measures that may be required. Refer to manufacturers' guidance, trade guidance, published Standards, etc.
5. Consider among other issues;
 - a. What will the contractor be doing? Where will they be doing it and when?
 - b. Does this put any of our staff at risk? Will our processes put the contractor or their staff at risk?
 - c. Should the contractor work only when our workforce is not present?
 - d. What knowledge do we have of the contractor's ability to manage health and safety?
 - e. Do we need to ask them to complete a pre-contract questionnaire or a method statement for the work?
 - f. Will they provide their own equipment - do they expect to use any of ours?
 - g. Will any plant they bring on site present risk to our workforce?
 - h. Does the place where the contractors will be working need to be fenced off to protect them from our work activities or vice versa?
 - i. Are their workers trained and competent?
 - j. Will the contractor's workers understand our rules, instructions and signs?
 - k. How well the contractor manages staff working on our site.
6. Develop procedures, programmes and practices for the times when contractors are working on our premises.

7. Make sure that Managers and Supervisors understand the procedures and arrangements. Consider whether they need any training.
8. Explain these arrangements to the workforce. Ensure they are understood and provide further training where necessary.
9. Implement the procedure and ensure that it is followed in practice.
10. Monitor and review the operation of this procedure from time to time and following any incident, injury or case of ill health, making changes to the procedure identified as necessary or beneficial.

Advice and guidance on health and safety during contract work can be found in Guidance Note 7-2.